



*From the*  
**GROUND UP** VOLUME 5

**MAY 9, 2026 | 1:00 PM EST**

*Angus, SimAngus, Red Angus & Commercial Females*

Hosted by Oleo Ranch in Elberton, GA





**OLEO Ranch**

**TODD, HOLLY, KY & CHAP ALFORD**

Todd (706) 207-9454 | Holly (706) 270-3994

1934 Flatwoods Road, Elberton, GA 30635

[www.OleoRanchCattle.com](http://www.OleoRanchCattle.com)

# Welcome

We are overly excited to welcome everyone to Volume 5 of **From the Ground Up** on May 9th, 2026. As you turn the pages of this sale book you will notice this is our largest offering to date. There has never in my 45 years on this Earth been a better time to be in the beef business. Cattle inventories are low nationwide and that is not something we can fix overnight. For this reason, I believe we are set for multiple years of good times in the cattle business. We cannot control what we cannot control in the markets or weather, but we can control our focus on creating a value-added product for our customers and for the beef consumer. At our place and at the ranches of our partners in this event, I can promise you that we will remain laser focused on making our cattle better and more suited for your needs.

If you know my family, you know we like to keep things going in high gear. If you do not know us, we are just a normal American family that is grateful to be able to enjoy our freedoms in America. We cherish the responsibility that our Lord and Savior Jesus Christ has given us to tend to his creation. The animals are fun to deal with most days. It is an honor for us to be able to tend to the land. Challenges present themselves and things are always changing but the grind is worth it. I have said all my adult life that there is no better way to raise a family than on a farm or ranch. I hope and pray that our boys will continue to be involved in the ranch in some capacity. I hope and pray they understand the benefit of a hard day's work. I hope and pray they will look back at their youth and one day realize just how fortunate we are to have wonderful people around us.

I would like to thank the people that have influenced my life. First off there is no way on Earth that we could come close to ranching or functioning much less have this event if it wasn't for Holly Alford. She is the best and hardest working human I know and of course I'm partial. The men in this sale are the ones that I bounce ideas off and lean on constantly. Many days we talk cattle but more importantly we talk life. Every single person involved with the cattle in this sale are family to me. Our church family and community are salt of the Earth folks. Thank you to folks of Rehoboth Baptist church for supporting us and our ventures. I would like to thank our blood kin as they are always there to support Oleo Ranch and our endeavors. My parents Calvin and Diane Alford are the ones who pushed my siblings and I to be great at what we do. Holly's family is a tight group. They are the best and we know her parents are looking down on us with a grin. To the young men on Ky's ball team that have helped us out in the past we say thank you. It has been fun to watch young men grow and mature. Cheyvis, Jose, Sam and occasionally Rylan have kept the farm going when we are out of town. These fellas love to feed a cow I can promise you. The people in this business make the grind worthwhile. Thank you to everyone who helps us live our dream.

We hope that you can join us in the Flatwoods community of Elberton, GA on May 9th, 2026. We will have the best Cowboy Burritos we can make for lunch. Videos of the sale cattle will be posted online at [www.oleoranchcattle.com](http://www.oleoranchcattle.com) prior to the sale for everyone to view. If you cannot join us in person, please call anyone involved in the event. We will stand behind these cattle the only way we know 100%.

God Bless you and enjoy the stock!

Todd Alford

# CONNECTING GREAT PEOPLE WITH ELITE CATTLE!

## *Sale Schedule*

**FRIDAY**

**MAY 8TH, 2026**

**Cattle available for viewing after lunch.**

**SATURDAY**

**MAY 9TH, 2026**

**12:30pm Cowboy Burritos for Lunch**

**1:00pm Sale Time**



**Saturday, May 9, 2026 at 1:00pm EST**

Lunch will be served approx 12:30 PM

#### SALE LOCATION

**Oleo Ranch, Home of the Alford's**  
**1934 Flatwoods Road • Elberton, GA 30635**

Todd (706) 207-9454 | Holly (706) 270-3994

#### DIRECTIONS

**14 miles From Elberton** Travel south on Hwy 17 and turn left on Calhoun Falls Hwy (Hwy 72E), just past Walmart. Travel east approximately 7 miles, just past the R&R Quick Stop, turn right onto Flatwoods Road. Travel south 2.8 miles to the T in the road, turn right and the farm is 1.5 miles on the left.

**24 miles From Washington** Travel north on Hwy 17 approximately 17 miles to River Road, turn right. Travel east 2.7 miles and turn left onto Flatwoods Road, the farm is 1.5 miles on the right.

#### AIR TRAVEL

**Hartsfield-Jackson Atlanta Airport** 135 miles away, approx 3 hours  
**Greenville-Spartanburg International Airport** 85 miles away, approx 1.5 hours  
**Charollette Douglas International Airport** 167 miles away, approx 3 hours

#### ACCOMMODATIONS

**The Sam Elbert Hotel** 4 S. Public Square • Elberton, GA 30635 (762) 533-0049  
**Quality Inn** 925 Elbert Street • Elberton, GA 30635 (706) 283-4221

#### SALE STAFF

Col. Thomas Carper *Auctioneer* (540) 336-2737  
David Gazda *Ringman* (706) 296-7846 • Josh Jasper *Ringman* (859) 285-8702

#### SALE CONSULTANTS

Adam Verner (706) 474-0091 | Jake Tiedeman (308) 520-0499 | Leroy Lane (912) 536-0523  
J.R. Richburg (386) 717-1827 | Matt Shirley (706) 983-0276

#### GUARANTEE

**ALL CATTLE SELL SATISFACTION GUARANTEED.**

#### EPDs

The EPDs are current for each respective breed as of April 10, 2026.

#### HERD HEALTH

Routine herd health and vaccinations are up to date on all animals.

#### TERMS & CONDITIONS

Cattle will sell under the suggested Terms and Conditions of the American Angus Association, American Simmental Association, and American Red Angus Association. All cattle sold are free of any known genetic defects. Terms for frozen genetics will be listed with the given lot.

#### TRUCKING

Todd will be happy to coordinate trucking of sale cattle at a reasonable rate.

#### PLEASE NOTE

All persons who attend the sale do so at their own risk. Neither Oleo Ranch nor the other consignors assume liability, legal or otherwise, for accidents or loss of property. Announcements made sale day from the auction block will take precedence over all printed material.

#### VIDEO AUCTION

All cattle will be available for viewing but will sell on video.



#### ONLINE BIDDING

The sale will be broadcast on LiveAuctions.TV

View Videos [www.OleoRanchCattle.com](http://www.OleoRanchCattle.com)



FLATWOODS RD  
0028

## Oleo *Flatwoods* 510N

BROUGHT TO YOU BY OLEO RANCH

*Patience* is key in livestock breeding. Holly and I consider ourselves young Angus breeders but have been breeding Angus cattle for twenty plus years. Every day we are trying to make the cattle better and to suit most any environment. Oleo Flatwoods 510N is as good of an animal as we have ever assembled. To start with he is made like a dream. His build, body shape, fleshing ability and real world performance are spot on for our world. His mother is incredible at raising high quality seedstock. She has that perfect Capitalist 316 look and udder quality second to none. One maternal sister to Flatwoods was the highlight of the 2024 From the Ground Up event, owned now by Circle F Farms. We believe Flatwoods has a bright future. He has a pedigree stacked with incredible cows. With breed impacting females like 4136 and 4407 from the famous SAV program on the top side and backed by Donna 1275 and Donna 714 on the maternal side his pedigree is rich for making incredible females. As our good friend and partner in this event Chandler Akins said " Flatwoods needs to breed every commercial heifer in the country to better the livestock and rebuild the nation's cowherd." We plan on using Flatwoods on our best cows at Oleo Ranch. We are committed to making cattle built to make our commercial cow calf producers better cattle. Flatwoods is going to be a link in the chain and a piece of our future. On May 9th we want him to become a big piece of your future.

**RETAINING 1/3 SEMEN INTEREST**

- THE HERD SIRE -

**510N** Oleo *Flatwoods* 510N

ANGUS  
HERD SIRE  
Reg 21525424  
DOB: 03/01/25  
Tattoo: 510N

Sire SAV Rainfall 6846  
**SAV DOWNPOUR 8794**  
S AV Madame Pride 4407  
LD Capitalist 316  
Dam **OLEO DONNA 010H**  
Oleo Donna 7TA1



CED	BW	WW	YW	SC	HP	Milk	DOC	Claw	Angle
+10	+1.1	+64	+115	+0.95	+13.4	+20	+16	+0.45	+0.39
Marb	RE	\$M	\$B	\$C					
+0.76	+0.85	+86	+158	+291					



**Lot 510**



**Oleo Donna 010H**

Dam of Lot 510

Owned by Circle F Farms of Baxley, GA



**Oleo Donna 7TA1**

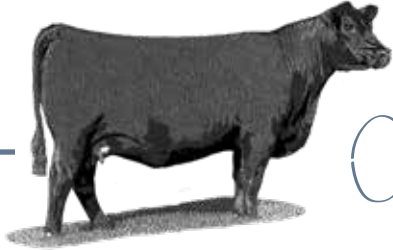
Granddam of Lot 510

Sold in FTGU Vol. 2 to Sam Critchelow of Kentucky.



**Oleo Donna 210K**

\$15,000 highlight from FTGU 2024  
Maternal sister to Lot 510



## Ode to the **Angus cow**

O ANGUS COW, IN THE FIELDS NATIONWIDE,  
WITH STEADY STEP AND PATIENT STRIDE,  
THROUGH WIND, AND SNOW, THROUGH BLAZING SUN,  
YOU THRIVE AS SEASONS COME AND RUN.

YOUR COAT AS DARK AS MIDNIGHT SKIES,  
THE TOUGHEST MOTHER WITH INSTINCT THAT NEVER DIES,  
THROUGH THE BLISTERING COLD, AND SUMMER'S FLAME,  
UNMOVED, UNBROKEN, YOU ARE STILL THE SAME.

WE'VE TRIED REAL MIGHTY TO LEAD YOU ASTRAY,  
EVERY TIME WE'VE DONE YOU WRONG YOU HAVE HEADED BACK OUR WAY,  
WE THINK WE GOT IT FIGURED OUT, US HUMANS LYING THERE IN BED,  
THANK THE LORD FOR YOU OLE GIRL YOU ALWAYS SEEM A STEP AHEAD.

WHEN ALL THE DUST SETTLES, YOU'RE THE ONE WHOSE STUCK AROUND,  
WE GET A TEAR IN OUR EYE WHEN IT IS YOUR TURN TO GO TO TOWN,  
YOUR ABILITY TO RISE ABOVE THE REST  
IS A TESTAMENT THAT YOU ARE THE BEST.

SO HERE'S MY ODE TO YOU SO GRAND,  
A HUMBLE QUEEN UPON THE LAND,  
MANY OF US BREEDERS HAVE TRIED TO TEST YOUR WILL  
AND YOU'VE TAUGHT THE ANGUS WORLD RESILIENCE STILL.

- Todd Alford -

- INCREDIBLE OPPORTUNITY -

# E/T *Eisa Erica* 486

BROUGHT TO YOU BY ET FARMS

*Eisa Erica*

*For* the past five years we have tried to lead off this offering with an elite animal. It took all I had to get Elrod/ Tolbert crew to let us offer this female to the public. When we were cruising the bred heifer pen to sort out sale cattle I found 486 from 200 yards and was going to plead with Elrod to let us have her for this event. Before I asked what she was he said no, ain't no way she needs to leave this ranch. After two days of back and forth he said it's probably time I turn loose of the best I have for the public to benefit. We talk a lot about how we like to build cattle. This one is near ideal in our opinion. She is wicked good looking, way feminine, loose made and perfect hipped. Her dam is consistently producing high caliber cattle and is backed by a proven maternal pedigree. Safe to calve early fall to BCC Rapport. Elrod let us pick out of 50 something and this is the best he has.

Aled to BCC Rapport on 11/24/25, due to calve September 2, 2026. Safe in calf.

**1**

## E/T *Eisa Erica* 486

ANGUS  
BRED HEIFER  
Reg 21272137  
DOB: 10/07/24  
Tattoo: 486

Sire SAV Renovation 6822  
**SAV JESSE JAMES 0968**  
SAV Blackcap May 8961  
Deer Valley Old Hickory  
Dam **E/T EISA ERICA 122**  
E/T Eisa Erica 933



CED	BW	WW	YW	SC	HP	Milk	DOC	Claw	Angle
+5	+2.3	+78	+131	+1.15	+12.4	+21	+10	+0.50	+0.49
Marb	RE	\$M	\$B	\$C					
+0.27	+0.47	+58	+103	+192					



**E/T Deep Roots 361**  
Maternal brother to Lot 1  
sold in CBL 2024



Lot 1

- A COW FAMILY LIKE NO OTHER -

# -A Burgess 162J

BROUGHT TO YOU BY BAR A RANCH



-A Burgess 162J  
Lot 2



-A Burgess 508  
Lot 2A



ACE Burgess 512

Donor dam of Lot 2 and the  
MGD of Lots 2A & 3.

## 2 -A Burgess 162J

ANGUS  
DONOR  
Reg 20365786  
DOB: 08/27/21  
Tattoo: 162

Sire **TEHAMA TAHOE B767**  
Tehama Upward Y238  
Tehama Mary Blackbird Y684  
S AV Resource 1441  
Dam **ACE BURGESS 512**  
Partisover Burgess 795



CED	BW	WW	YW	SC	HP	Milk	DOC	Claw	Angle
+9	-0.1	+68	+120	+0.45	+12.4	+23	+20	+0.39	+0.45
Marb	RE	\$M	\$B	\$C					
+0.74	+0.87	+94	+149	+287					

## 2A -A Burgess 508

ANGUS  
OPEN HEIFER  
Reg 21545914  
DOB: 08/21/25  
Tattoo: 508

Sire **BCC RAPPORT**  
Square B True North 8052  
BCC Everelda Entense 58J  
Tehama Tahoe B767  
Dam **BAR A BURGESS 162J**  
ACE Burgess 512



CED	BW	WW	YW	SC	HP	Milk	DOC	Claw	Angle
+12	-1.3	+69	+125	+0.80	+11.6	+26	+22	+0.25	+0.41
Marb	RE	\$M	\$B	\$C					
+0.93	+0.70	+89	+163	+300					

Woah what kind of sports car do you like to drive? This fall heifer calf could be your Mustang, Lambo, or Porsche 911. She is made well from a maternal design standpoint and has done well off mama and Akins winter grazing. Sired by the popular going to get more limited ST Genetics calving ease Maternal dream, BCC Rapport. The days in front of this fall baby are bright. She displays a balance of calving ease, performance, and maternal ability in a slick haired good natured package.

Ladies and gentlemen we have us a power cow bred with as much maternal potential as you could wish for. -A Burgess 162J is a member of one of the deepest flushes ever created at Bar A Ranch in Nashville, GA. One of the most impressive attributes of this young female is her ability to produce pounds of calf while maintaining body flesh through the winter. We are convinced the Burgess cow family particularly those that derive from 795 and 133 have a unique or different metabolism. We have found they these cattle can just do more with less. 162J sells safe to LT Clarion 9054 for a maternal dream. We have sampled several LT sires this past winter and can't wait to incorporate another dose of highly productive cows into the pedigrees at Bar A Ranch. Aled to LT Clarion 9054 on 11/25/25, due to calve September 3, 2026. Safe in calf.

- ANGUS FEMALES -

# -A Burgess 406

BROUGHT TO YOU BY BAR A RANCH

*We* love the power and dimension this bred heifer brings to the table. She is wide from her muzzle to her caboose. The extra substance Burgess 406 displays makes us believe she could create powerhouse sons that make commercial cattleman drool. We can't wait to get the daughters of Rise Above in productions. They have been high performance cattle that have been well received by our customer base. The final chapter is coming as the daughters go into lactation. 406 blends calving ease genetics with powerful phenotype backed by the best cow to ever graze in Nashville, GA the Burgess 512 female. If you like cattle that are dense and slick haired with cows behind them that can tote water when it's dry, get your trailer in line at From the Ground Up Volume 5.

Aled to LT Talent 3012 on 11/21/25, due to calve August 30, 2026. Safe in calf.

**3**

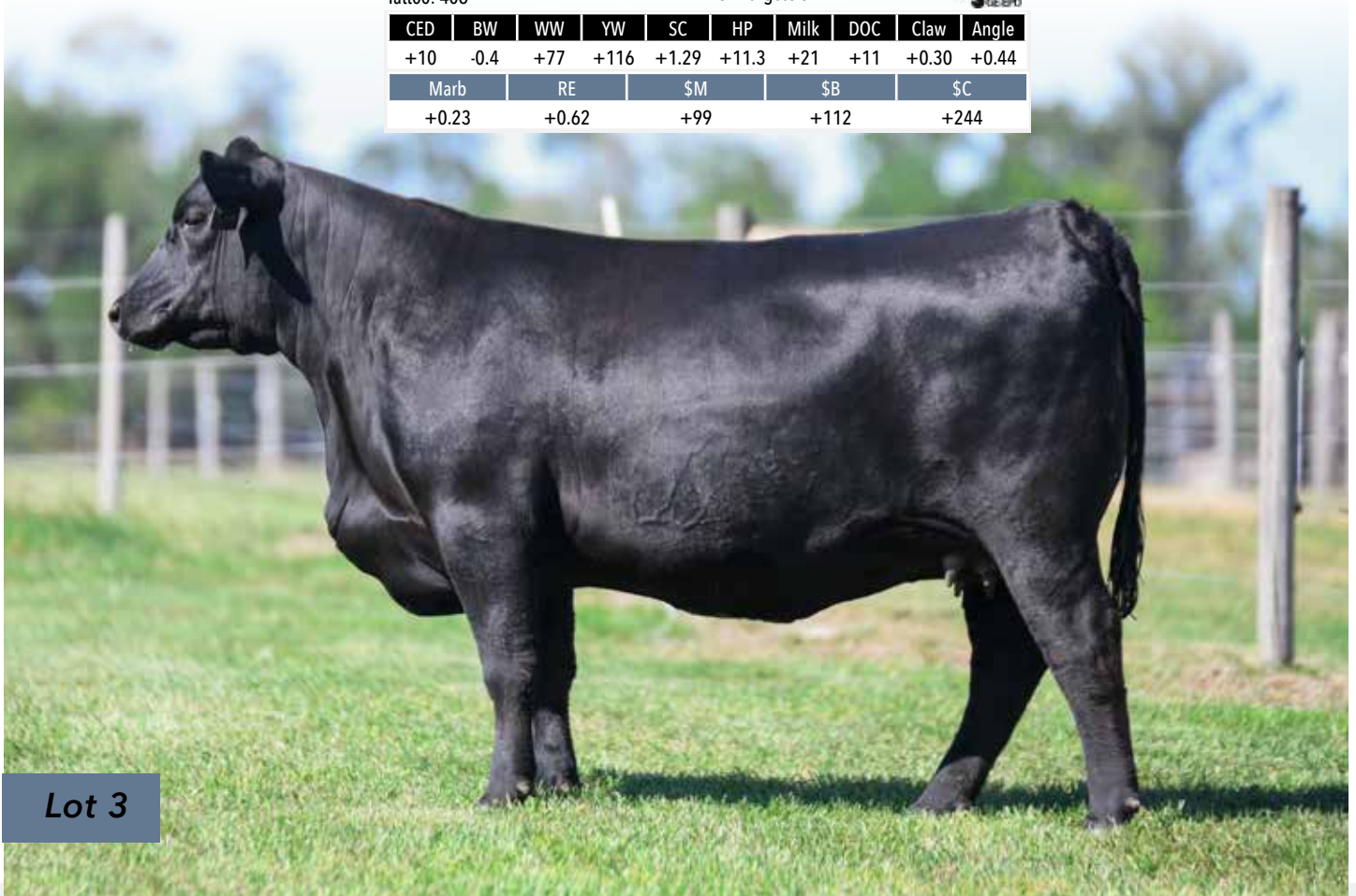
## -A Burgess 406

ANGUS  
BRED HEIFER  
Reg 21274646  
DOB: 08/29/24  
Tattoo: 406

Sire Hoffman Stagecoach 1908  
**STELLFLUG HOFFMAN RISEABOVE**  
Hoffman 3210 Rita Lady 0256  
Dam Musgrave 316 Stunner  
**ACE BURGESS 006**  
ACE Burgess 512



CED	BW	WW	YW	SC	HP	Milk	DOC	Claw	Angle
+10	-0.4	+77	+116	+1.29	+11.3	+21	+11	+0.30	+0.44
Marb	RE	\$M	\$B	\$C					
+0.23	+0.62	+99	+112	+244					



Lot 3



**Partisover Burgess 795**  
The maternal granddam of Lot 2 and third dam of Lot 2 A & 3.



**-A Burgess 309**  
Produced from a full sister to Lot 2, hi-selling bred heifer in the FGU 2024. Owned by Kent Brown in TN



**-A Tahoe 139J**  
512 son and a full sib to Lot 2



**-A Justified 459**  
512 son and a maternal sib to Lot 2

# Flush Opportunity



**Partisover Burgess 080**  
Daughter of Lot 4A donor



**Lot 4A Donor**



**ACE Aspire 505**  
Hi-selling bull in The Source 2025  
purchased by Salacoa Cattle and  
grandson of Lot 4A donor



**Lot 4B Donor**



**Partisover Burgess 922**  
Dam of Lot 4B donor

BROUGHT TO YOU BY SALACOA CATTLE COMPANY


*Most* of us are in the purebred seedstock business because we love the drive that comes with creating good livestock. No matter the breeding objectives the passion for chasing a better creature gets most breeders wound up. This is definitely the case at Salacoa Cattle Company. Brad Cox has assembled some of the best Burgess females to hail from the great Partisover herd and he is on a mission to mass produce those genetics. The "Salacoa Way" is to simply buy the best animals that fit his narrative and start laying in those incredible daughters into his operation. It took all the convincing in the world to get Brad to offer up the right to flush one of these fabulous females. Partisover Burgess 843 is a massive gal. She can produce power consistently. One of our favorite daughters owned by Callie Akins is the potent Burgess 080 that produced the \$33,000 ACE Aspire 505 bull that topped last years The Source Sale. We know there are numerous sisters to 843 that can carry the mail but we believe 843 is the most powerful three dimensional sister from the Sky High x Burgess 133 mating. The second opportunity is to flush Partisover Burgess 281 the highly attractive, wide based Rainfall daughter of the legendary Burgess 922. If you want a female that will crank you trigger you need to come see what 281 is all about. Two maternal sisters to 281 created a buzz in the 2024 Between the Brands Sale averging \$20,000. **Selling the right to flush either donor with a guarantee of 6 grade one embryos with no cap to the bull of your choice.** Contact Brad or Todd about how these cows have done and with any questions. They are both currently open and ready to flush soon if you so choose. The buyer will be responsible for all flush and semen costs.

4A

## Partisover Burgess 843

Sire **MUSGRAVE SKY HIGH 1535**  
Musgrave Big Sky  
Flag Queen W 00649

Dam **PARTISOVER BURGESS 133**  
Sinclair Grass Master  
Partisover Burgess 8112



**FLUSH**  
Reg 19222100  
DOB: 09/02/17  
Tattoo: 843


CED	BW	WW	YW	SC	HP	Milk	DOC	Claw	Angle
2	4.2	67	116	0.56	7.8	23	15	0.24	0.34
Marb	RE	\$M	\$B	\$C					
0.38	0.81	59	137	237					

4B

## Partisover Burgess 281

Sire **S A V RAINFALL 6846**  
Coleman Charlo 0256  
S AV Blackcap May 4136

Dam **PARTISOVER BURGESS 922**  
Plattermere Weigh Up K360  
Partisover Burgess 133



**FLUSH**  
Reg 20401834  
DOB: 09/19/21  
Tattoo: 281

CED	BW	WW	YW	SC	HP	Milk	DOC	Claw	Angle
11	-0.9	58	104	0.33	12.8	34	11	0.54	0.51
Marb	RE	\$M	\$B	\$C					
0.6	0.39	94	107	233					

# The Burgess Girls



**Partisover Burgess 661**  
Dam of Lot 5 and MGD of Lot 5A

BROUGHT TO YOU  
BY SALACOA CATTLE COMPANY

**Salacoa** Burgess 4006 is a first calf heifer with a lifetime of productivity in front of her. She ranks in the top 1% of the population for \$M and is backed by a beautiful Brilliance daughter that is stout and punchy. 4006 herself is a well-designed female with muscle shape and excellent base width. Her stoutness of feature allow us to believe she will raise power bulls with great durability. The Prolific cattle in our mind are great footed, docile, easy to maintain and will raise stout performance oriented progeny. 4006 sells with a young bull calf at side by E/T Custom Built a young herdsire that we have big plans for in the coming years.

Sells open ready to breed to your favorite sire.

**5**

## Salacoa Burgess 4006

ANGUS  
BRED COW  
Reg 20913707  
DOB: 02/16/24  
Tattoo: 4006

Sire **ELLINGSON PROLIFIC**  
EA Queen 8070  
S AV Brilliance 8077  
Dam **PARTISOVER BURGESS 661**  
Partisover Burgess 456



CED	BW	WW	YW	SC	HP	Milk	DOC	Claw	Angle
4	1.5	76	128	0.55	16.4	19	12	0.27	0.32
Marb		RE	\$M	\$B	\$C				
0.26		0.42	119	121	276				

**5A**

## Salacoa Custom Built 609

ANGUS  
BULL CALF  
Reg 21544427  
DOB: 02/25/26  
Tattoo: 609

Sire **E/T CUSTOM BUILT 367**  
E/T Eisa Erica 825  
Ellingson Prolific  
Dam **SALACOA BURGESS 4006**  
Partisover Burgess 661



CED	BW	WW	YW	SC	HP	Milk	DOC	Claw	Angle
6	1.0	76	129	0.59	14.9	23	15	0.38	0.36
Marb		RE	\$M	\$B	\$C				
0.46		0.7	110	146	299				



**Lot 5**

- AN ELITE GENETIC OPPORTUNITY -

# Potts Bros *Abigale* 419P

BROUGHT TO YOU BY POTTS BROS FARM

*We* absolutely love this female. We dig her from every angle. Her power, added dimension, muscle expression and foot quality are spot on. Her dam is proving to be a consistent producer of high end stock. Full brothers to 419P were well received in the 2025 Cowboy Logic Bull sale. We believe in a balanced approach of breeding Angus cattle from data standpoint. 419P is well rounded in her genetic predictors with cow power behind her. The Abigale females are elegant, whale bellied cattle with built in growth and great maternal instinct. 419P is safe in calf to AAR Augusta and we couldn't be more impressed with his development and maturity. Augusta is going to make an impact at Potts Brothers Farm.

Aled to AAR Augusta on 11/16/25, due to calve August 25, 2026 and PE to AAR Augusta (21149817) 12/9/25-2/3/26. Confirmed Safe AI.



**Lot 6**

**6**

## Potts Bros *Abigale* 419P

ANGUS  
BRED HEIFER  
Reg 21214621  
DOB: 08/25/24  
Tattoo: 419P

Sire **4M BLOCKADE 120**  
Sitz Barricade 632F  
EF Everelda Entense 2421  
LD Capitalist 316

Dam **INGRAM ABIGALE 9306**  
Ingram Abigale 7566



CED	BW	WW	YW	SC	HP	Milk	DOC	Claw	Angle
+8	+1.4	+75	+132	+0.90	+11.9	+35	+25	+0.51	+0.47
Marb	RE	\$M	\$B	\$C					
+0.94	+0.42	+92	+170	+312					



**Ingram Abigale 9306**  
Dam of Lot 6

- ANGUS FEMALES -



**E/T Wyoming**  
Maternal brother to Lot 7 now enrolled in Genex AI company



**Lot 7**

# Bred Heifers



**Brock Rita B30**  
\$11,000 Maternal sister to Lot 8



**Lot 8**

**7** **E/T Blackbird 417**

ANGUS BRED HEIFER  
Reg 21289287  
DOB: 08/18/24  
Tattoo: 417

Sire **4M BLOCKADE 120**  
Sitz Barricade 632F  
EF Everelda Entense 2421  
JVC Cavalry V3326

Dam **E/T BLACKBIRD 901G**  
Deer Valley Blackbird 3103

CED	BW	WW	YW	SC	HP	Milk	DOC	Claw	Angle
+4	+1.1	+69	+110	+0.75	+13.3	+20	+0	+0.47	+0.45
Marb		RE		\$M		\$B		\$C	
+0.50		+0.88		+72		+153		+270	

**BROUGHT TO YOU BY ET FARMS**

At Elrod and Tolbert we have been excited about 417's maternal brother that works for Abernathy Ranches and is now part of the Genex AI company, E/T Wyoming. He was a highlight of the 2023 Cowboy Logic event and is doing an incredible job for Rhett and company in their environment. The descendants of Blackbird 3103 have left an unimaginable impact on the Potts and Elrod herds. There are several sisters to 417's dam that have generated high end stock. The performance is real in these cattle. The base width and extra visual muscle is intriguing. Here is your opportunity to invest in a maternal sister to an up and coming super star bred to work in any environment. PE to E/T Blockade 4104 (AAA 21272128). Due approximately early October.

**8** **Potts Bros Rita 42**

ANGUS BRED HEIFER  
Reg 21199081  
DOB: 08/10/24  
Tattoo: 42

Sire **E/T DETROIT 112**  
Square B True North 8052  
E/T Forever Lady 173  
Deer Valley Growth Fund

Dam **BROCK RITA B90**  
Kory B82 of Complete N6171

CED	BW	WW	YW	SC	HP	Milk	DOC	Claw	Angle
+14	-2.7	+61	+119	+0.66	+10.4	+31	+19	+0.45	+0.48
Marb		RE		\$M		\$B		\$C	
+0.76		+0.39		+58		+148		+250	

**BROUGHT TO YOU BY POTTS BROS FARM**

This elite calving ease individual is built so well From the Ground Up. She has a presence that will captivate your attention and will make you ask what is that one when you drive in the pen at Potts Brothers. Rita 42 is a maternal sister to the \$11,000 B30 female that sold in last year's event. The cattle out of B90 cow have been stout made, dense animals that come with real world performance and extra shape. We appreciate the sensible size of 42 and believe she will make a wonderful brood cow for years to come. Her sire was an attractive balanced bull we purchased from our partners over at E/T and have been pleased with his ability to transmit look and skeletal correctness. Rita 42 sells safe to Sitz Program to calve early fall. Several of the Ground Up breeders used Program heavily and can't wait to see the results. Aled to Sitz Program on 12/9/25, due to calve September 18, 2026, and PE to 7 E G Free Mason L263 (AAA 20911272) 12/9/25-2/3/26. Confirmed Safe AI.



Lot 9

# The Donna's

BROUGHT TO YOU BY VF LIVESTOCK

*For* those of you that know Adam Verner if we speak his name you will know his cattle will be flat good stock. If you don't know Adam and his wife Megan let me tell you they have a keen eye for building elite cattle that are problem free and calf raising machines. Adam and Megan have the ability to produce cattle that are incredible in terms of skeletal build. They are long level hipped cattle with extraordinary femininity and tons of body volume. They milk well, do a great job tending to their progeny and kick tail when it comes weaning time. No matter what your breeding goals are the Verner cattle will serve well for foundation females. They work hard, shed off well, and produce value added seedstock for folks in many climates. This pair of Angus females is what makes us so excited to raise Angus cattle every day. They are simply good cattle with no problems and the ability to generate with the best. They are backed by the elite Donna cow family that has graced the breed for years.

Aled to Baldrige Grindstone on 11/25/25, due to calve September 3, 2026. Confirmed Safe AI.

9

## VER Donna 114

ANGUS  
BRED COW  
Reg 20135133  
DOB: 09/25/20  
Tattoo: 114

Sire **LD CAPITALIST 316**  
Connealy Capitalist 028  
LD Dixie Erica 2053  
Dam **DAVIS DONNA 5308**  
S A V Response 2411  
C C A Donna 044



CED	BW	WW	YW	SC	HP	Milk	DOC	Claw	Angle
+15	-1.7	+38	+69	+0.35	+9.7	+24	+19	+0.41	+0.34
Marb		RE		\$M		\$B		\$C	
+0.33		+0.67		+76		+145		+264	

9A

## VER Donna 603

ANGUS  
OPEN HEIFER  
Reg 21536585  
DOB: 08/28/25  
Tattoo: 603

Sire **BEAR MTN JUSTIFY**  
KG Justified 3023  
Bear Mtn Judy 3092  
Dam **VER DONNA 114**  
LD Capitalist 316  
Davis Donna 5308



CED	BW	WW	YW	SC	HP	Milk	DOC	Claw	Angle
+13	-1.0	+59	+105	+1.40	+11.0	+33	+18	+0.40	+0.42
Marb		RE		\$M		\$B		\$C	
+0.50		+0.87		+70		+159		+276	

# Spring Pairs



Lot 10



Lot 11

## 10 Miss BRF *Jesse Jane* 155

ANGUS  
SPRING PAIR  
Reg 21553224  
DOB: 09/04/21  
Tattoo: 155

Sire SAV Renovation 6822  
**SAV JESSE JAMES 0968**  
SAV Blackcap May 8961  
Connealy Impression  
Dam **THOMAS PRIMROSE 21161**  
Thomas Primrose 61144

CED	BW	WW	YW	SC	HP	Milk	DOC	Claw	Angle
+4	+2.6	+59	+94	+1.86	+9.1	+25	+12	+0.42	+0.42
Marb	RE	\$M	\$B	\$C					
+0.48	+0.32	+59	+100	+189					

### BROUGHT TO YOU BY BROAD RIVER FARM

When we saw Jesse James on a cold day before the SAV sale that year he was one of the most captivating bovines we'd ever seen in person. When you see 155 in person or in video you will realize why we loved Jesse James. This cow is built nearly ideal in her makeup. She is dead level spinned and perfectly square hipped with tons of body capacity and an elegant front end. Some may ask why are we so enamored with making cattle look a certain way. How does that affect their ability to raise beef? We would answer that we think there is a direct correlation between body type and structure and their ability to function at a high level on forage. Also we want to make thick, stout, highly phenotypically pleasing bulls that will leave our commercial customers with the best replacement females. To do so we believe their mothers need to look a certain way and hold their flesh while working hard raising a baby. 155 is built for the long haul.

Lot 10A: Bull calf born 3/10/26 by BRF MR Incentive 3147 (AAA 21013795).  
Tattoo 5234

## 11 Miss BRF *Lucy* 1703

ANGUS  
SPRING PAIR  
Reg 21552423  
DOB: 09/03/21  
Tattoo: 1703

Sire LD Capitalist 316  
**MUSGRAVE 316 STUNNER**  
MCATL Blackbird 831-1378  
Thomas Big River 4081  
Dam **THOMAS MISS LUCY 7441**  
Thomas Miss Lucy 4475

CED	BW	WW	YW	SC	HP	Milk	DOC	Claw	Angle
+4	+1.3	+69	+119	+1.40	+9.0	+24	+18	+0.55	+0.50
Marb	RE	\$M	\$B	\$C					
+0.50	+0.43	+47	+128	+213					

### BROUGHT TO YOU BY BROAD RIVER FARM

The Thomas Lucy cows have been important for the maternal sector of the Angus breed. The crew at Broad River Farm has invested deeply in Thomas Angus Ranch females. I'll never forget when Jacob, Wayne and myself went to Thomas to purchase that first big group of cows. We had some data and info in hand before we seen the cattle. When we hit the first pasture there was a Lucy female that made my mouth water. It was like Rob Thomas had planned for that cow to pass our sites first. Wayne and Jacob were in and off they were to running with that base of cows to begin their foundation Angus herd. Today the descendants of those Thomas cows do an incredible job for the crew at Broad River.

Lot 11A: Heifer calf born 3/12/26 by BRF MR Incentive 3147 (AAA 21013795).  
Tattoo 5244

# The Rita's



**Lot 12**



**TCC Rita 015**  
Granddam of Lot 12



**TCC Rita 757** Full sister to Lot 12

## 12 TCC Rita 756

ANGUS  
BRED COW  
Reg 20682049  
DOB: 09/22/21  
Tattoo: 756

Sire **SQUARE B ATLANTIS 8060**  
S AV Rainfall 6846  
Elbanna of Conanga 1209  
Dam **TCC RITA 423F**  
S AV Momentum 9274  
TCC Rita 015

CED	BW	WW	YW	SC	HP	Milk	DOC	Claw	Angle
+5	+1.6	+58	+102	+1.17	+12.9	+26	+14	+0.37	+0.49
Marb		RE		\$M		\$B		\$C	
+0.32		+1.03		+74		+131		+244	

## 12A TCC Rita 1394

ANGUS  
OPEN HEIFER  
Reg 21547283  
DOB: 10/20/25  
Tattoo: 1394

Sire **-A RAINFALL 239**  
S AV Rainfall 6846  
ACE Burgess 717  
Dam **TCC RITA 756**  
Square B Atlantis 8060  
TCC Rita 423F

CED	BW	WW	YW	SC	HP	Milk	DOC	Claw	Angle
+8	+0.0	+54	+98	+1.10	+12.3	+30	+13	+0.39	+0.48
Marb		RE		\$M		\$B		\$C	
+0.41		+0.75		+73		+130		+242	

BROUGHT TO YOU BY TRADITIONS CATTLE COMPANY

I've said for years if you get a minute to stop by Traditions Cattle Company in Calhoun, GA you need to visit David and Judy Craig. They are salt of the Earth folks that have roots buried deep in Agriculture. David don't put up with a cow that can't raise a big calf and breed back on time. His cattle are functional, easy doing, big bodied, moderate statured cattle with a keen look. It took all I could do to get Craig to sell TCC Rita 756. She is one productive machine. At Traditions, 756 has eight daughters and four sons sired by Sitz Program that are real good cattle. 756 is a little bigger outlined cow at Traditions Cattle but she has that striking look David Craig gravitates to. She sells with a young heifer calf at side by a Rainfall son David purchased from The Source a couple years back. Rita 756 has produced 54 embryos in 3 conventional flushes and those embryos take rather well. TCC Rita 756 was Aled to E/T Talmo 3/14/2026, she will be preg checked prior to sale.

From the Ground Up | 5.9.2026

## 12B Rangeland x TCC Rita 756 Embryos

SELLING 3 CONVENTIONAL EMBRYOS

Sire **ELLINGSON RANGELAND**  
Basin Rainmaker 4404  
SITZ Pride 200B

Dam **TCC RITA 756**  
Square B Atlantis 8060  
TCC Rita 423F

Selling 3 conventional embryos guaranteeing 1 pregnancy if implanted by a certified technician.



**Ellingson Rangeland**  
Sire of Lot 12B Embryos

- CHOICE LOT -

# Heifer

## Babies



## Selling Choice

BROUGHT TO YOU BY  
TRADITIONS CATTLE COMPANY

*Here* is the next generation of productive females from Craigtown Road. These 3 Sitz Program daughters are high performance cattle with rapid early growth and an excellent build. They have brothers that will definitely be high-lights of Craig's bull calf crop and destined to see commercial cowherds this winter once developed. If you want cattle with look and the correct skeletal build these females should be on your radar. We should have DNA analysis back by sale time to see how these females shake out from a predictor standpoint. High quality cattle never go out of style.

### 13A TCC Rita 1379

ANGUS  
OPEN HEIFER  
Reg 21558020  
DOB: 09/15/25  
Tattoo: 1379

Sire **SITZ PROGRAM**  
Sitz Resilient 10208  
Sitz Erica Everelda 2007  
Square B Atlantis 8060  
Dam **TCC RITA 756**  
TCC Rita 423F

CED	BW	WW	YW	SC	HP	Milk	DOC	Claw	Angle
+7	+0.8	+67	+115	+1.41	+15.0	+30	+18	+0.41	+0.47
Marb		RE		SM		SB		SC	
+0.58		+0.95		+91		+145		+279	

### 13B TCC Rita 1380

ANGUS  
OPEN HEIFER  
Reg 21558022  
DOB: 09/16/25  
Tattoo: 1380

Sire **SITZ PROGRAM**  
Sitz Resilient 10208  
Sitz Erica Everelda 2007  
Square B Atlantis 8060  
Dam **TCC RITA 756**  
TCC Rita 423F

CED	BW	WW	YW	SC	HP	Milk	DOC	Claw	Angle
+7	+0.8	+67	+115	+1.41	+15.0	+30	+18	+0.41	+0.47
Marb		RE		SM		SB		SC	
+0.58		+0.95		+91		+145		+279	

### 13C TCC Rita 1382

ANGUS  
OPEN HEIFER  
Reg 21558031  
DOB: 09/16/25  
Tattoo: 1382

Sire **SITZ PROGRAM**  
Sitz Resilient 10208  
Sitz Erica Everelda 2007  
Square B Atlantis 8060  
Dam **TCC RITA 756**  
TCC Rita 423F

CED	BW	WW	YW	SC	HP	Milk	DOC	Claw	Angle
+7	+0.8	+67	+115	+1.41	+15.0	+30	+18	+0.41	+0.47
Marb		RE		SM		SB		SC	
+0.58		+0.95		+91		+145		+279	

# Bred Heifer Division



## 14 VER Everelda Entense 505

ANGUS  
BRED HEIFER  
Reg 21201276  
DOB: 09/01/24  
Tattoo: 505

Sire **KG Justified 3023**  
**BEAR MTN JUSTIFY**  
Bear Mtn Judy 3092  
Sitz Barricade 632F  
Dam **VER EVERELDA ENTENSE 309**  
VER Everelda Entense 762



CED	BW	WW	YW	SC	HP	Milk	DOC	Claw	Angle
+5	+2.9	+84	+147	+1.14	+13.6	+27	+10	+0.46	+0.51
Marb		RE		\$M		\$B		\$C	
+0.53		+0.49		+60		+163		+271	

BROUGHT TO YOU BY VF LIVESTOCK

We lead off a section of fall calving bred heifers with an absolute hammer. 505 stems from a long list of potent cows in the VER program. The Everelda Entense cows have been a blessing to those that have owned them. One of my favorite cows I can ever remember seeing in person was Sitz Everelda Entense 1905 as a young lad. She will go down in my mind as an epitome of greatness for maternal cattle. This Bear Mtn Justify daughter traces back 4 generations ago to 1905 and has the look of high quality maternal bred stock. 505 is as angular, feminine and big bodied as you can make one with that look of a brood cow in the making.

Aled to Coleman Below Zero on 11/25/25, due to calve September 3, 2026.  
Confirmed Safe AI.

## 15 Potts Bros Sara 4112

ANGUS  
BRED HEIFER  
Reg 21197560  
DOB: 10/16/24  
Tattoo: 4112

Sire **Myers Fair-N-Square M39**  
**E/T UNDISPUTED 220**  
E/T Barbara 827  
S AV Jesse James 0968  
Dam **POTTS BROS SARA 2228**  
BC Sara 706



CED	BW	WW	YW	SC	HP	Milk	DOC	Claw	Angle
+10	+0.8	+80	+136	+0.31	+12.7	+28	+23	+0.36	+0.34
Marb		RE		\$M		\$B		\$C	
+1.04		+0.78		+97		+160		+305	

BROUGHT TO YOU BY POTTS BROS FARM

If we can make cattle like Potts Bros Sara 4112 that is our goal. She is built well at the ground, has a great temperament, a big expansive rib cage, a loose correct skeletal build and has a balanced set of genetic predictors. From calving ease to growth and maternal traits to a top 10% CLAW and top 4% ANGLE EPD to a shade over +1.0 Marb figure to balanced \$ Indices. 4112 is a great example of the disciplined breeding approach of Kyle Potts. Tie into these young, bred females they are going to have added value for quite some time. Look out she is safe to the maternal legend LD Capitalist 316 for an early fall baby.

Aled to LD Capitalist 316 on 12/5/25, due to calve September 14, 2026,  
and PE to 7 E G Free Mason L263 (AAA20911272) 12/9/25-2/3/26. Confirmed Safe AI.

16

Potts Bros *Empress* 4011

ANGUS  
BRED HEIFER  
Reg 21196104  
DOB: 08/06/24  
Tattoo: 4011

Sire **4M BLOCKADE 120**  
Sitz Barricade 632F  
EF Everelda Entense 2421  
Dam **POTTS BROS EMPRESS 8006**  
Deer Valley Old Hickory  
PF Empress 6511



CED	BW	WW	YW	SC	HP	Milk	DOC	Claw	Angle
+1	+3.5	+79	+133	+0.71	+8.9	+29	+18	+0.46	+0.49
Marb	RE	\$M	\$B	\$C					
+0.69	+0.92	+61	+161	+270					

BROUGHT TO YOU BY ET FARMS

Blockade X Old Hickory combination that has power in the blood written all over her. We have several Old Hickory daughters that rise to the top of our programs due to their ability to generate good cattle and added revenue. They are hard-working cows with added length of body and a very feminine look. Add the power and muscle shape Blockade brings to the table and the recipe is enticing. We believe the Angus population needs to add some shape and muscle into the cattle to produce pounds. Red meat yield is going to be a topic of conversation in the industry in the future. Sometimes we need to relax on the calving ease and create more power cattle that carry higher than average birth weight stats.

PE to Bear Mtn Covert (AAA 21036953). Confirmed safe, due approximately late September.

Angus Bred *Heifers*



Lot 16

17

Potts Bros *Forever Lady* 4054

ANGUS  
BRED HEIFER  
Reg 21196143  
DOB: 08/25/24  
Tattoo: 4054

Sire **SAV THUNDERBOLT 1745**  
S AV Circuit Breaker 7136  
S AV Blackcap 8775  
Dam **POTTS BROS FOREVER LADY 1020**  
S AV Bloodline 9578  
Potts Bros Forever Lady 7043



CED	BW	WW	YW	SC	HP	Milk	DOC	Claw	Angle
-8	+5.2	+85	+150	+1.91	+11.3	+21	+20	+0.33	+0.38
Marb	RE	\$M	\$B	\$C					
+0.38	+0.33	+50	+143	+235					

BROUGHT TO YOU BY ET FARMS

It was a good day in Saint Anthony, ND when we acquired SAV Thunderbolt a few year back. His daughters are exactly what we had hoped he would produce. They are very consistent in kind with very few that don't make the cut. Forever Lady 4054 is one stout individual. She has growth genetics built in for multiple generations. We understand she comes with higher birth weight figures but to get the power sometimes we feel like you got to push the envelope. This big hiped, stout featured female is destined to create heavy progeny at weaning and beyond.

PE to E/T Blockade 4104 (AAA 21272128). Confirmed safe, due approximately late September.



Lot 17

18

Potts Bros *Sara* 4027

ANGUS  
BRED HEIFER  
Reg 21215407  
DOB: 08/15/24  
Tattoo: 4027

Sire **COLEMAN BELOW ZERO 2106**  
Sitz Stellar 726D  
Coleman Donna 0153  
Dam **POTTS BROS SARA 1003**  
S AV Bloodline 9578  
BC Sara 706



CED	BW	WW	YW	SC	HP	Milk	DOC	Claw	Angle
-2	+3.4	+81	+144	+1.33	+12.2	+26	+30	+0.46	+0.54
Marb	RE	\$M	\$B	\$C					
+0.60	+0.16	+52	+133	+225					

BROUGHT TO YOU BY ET FARMS

The older our Below Zero cattle get the more we like them. There is no questioning why the Coleman program is so widely respected for maternally oriented cattle. We have also been impressed with our Bloodline daughters in production. They are larger outlined cattle that weigh a good bit but they create cattle with exceptional growth. 4027 is a stout made, big bodied female with added substance and excellent width. PE to E/T Blockade 4104 (AAA 21272128). Confirmed safe, due approximately late September.



Lot 18



Lot 19

# Bred Heifer *Division*



Lot 22

**19** E/T *Dandy* 491

ANGUS BRED HEIFER  
Reg 21272121  
DOB: 10/10/24  
Tattoo: 491

Sire **SAV SMOKEHOUSE 2889**  
S AV Scale House 0845  
S AV Madame Pride 8487

Dam **E/T DANDY 029**  
S S Niagara Z29  
S/A Dandy R26

CED	BW	WW	YW	SC	HP	Milk	DOC	Claw	Angle
+4	+2.6	+76	+137	-0.26	+6.8	+25	+21	+0.42	+0.26
Marb	RE	\$M	\$B	\$C					
+0.48	+0.76	+59	+158	+264					

**BROUGHT TO YOU BY ET FARMS**

The cow family behind this lovely Smokehouse daughter are performance generators with a cool story. The grand dam of 491 was purchased alongside her dam as a pair several years back from our good friends at Smith Angus in Wadley, GA. That was a real nice, solid pair that day but we had no idea the impact the heifer calf on side of that pair would drive progress as much as she would. Needless to say in true Elrod fashion the ROI on S/A Dandy R26 has been incredible. Layer on a dose of SS Niagara Z29 and SAV Smokehouse and you have a recipe for excellent cattle that should last a while. PE to Bear Mtn Covert (AAA 21036953). Confirmed safe, due approximately mid October.

**22** E/T *Burgess* 2409

ANGUS BRED HEIFER  
Reg 21273120  
DOB: 08/08/24  
Tattoo: 2409

Sire **4M BLOCKADE 120**  
Sitz Barricade 632F  
EF Everelda Entense 2421

Dam **GRETSCH BURGESS 1002**  
Connealy Thunder  
Circle S Burgess 6414

CED	BW	WW	YW	SC	HP	Milk	DOC	Claw	Angle
+7	+0.4	+71	+120	+0.83	+10.9	+21	+10	+0.44	+0.41
Marb	RE	\$M	\$B	\$C					
+0.00	+0.64	+83	+111	+227					

**BROUGHT TO YOU BY ET FARMS**

I am not sure if I can count how many good cattle at Elrods place are a descendant of Burgess 1002. There would be to many to list and I'm sure if I was a little more handy with the search tool in the login portion at the American Angus Association website I could find this number out. Blockade consistently adds power and good feet. Burgess 1002 consistently adds depth of body, fleshing ease and that beautiful Angus female look. We like this heifer quite well and believe she can have an impact on your program for quite some time. PE to E/T Blockade 4104 (AAA 21272128). Confirmed safe, due approximately early October.

**20** E/T *Blackcap* 435

ANGUS BRED HEIFER  
Reg 21272082  
DOB: 09/04/24  
Tattoo: 435

Sire **SAV SMOKEHOUSE 2889**  
S AV Scale House 0845  
S AV Madame Pride 8487

Dam **E/T BLACKCAP 943**  
S AV Renown 3439  
E/T Blackcap 154

CED	BW	WW	YW	SC	HP	Milk	DOC	Claw	Angle
+10	+1.2	+57	+105	+0.41	+8.1	+30	+20	+0.41	+0.43
Marb	RE	\$M	\$B	\$C					
+0.48	+0.53	+64	+102	+196					

**BROUGHT TO YOU BY ET FARMS**

Come on down to the Flatwoods community on May 9th for the finest Cowboy Burritos known to man, great fellowship with cattlemen and women and some solid Angus seedstock. This pedigree reads with as much maternal punch as any in the sale. She would trace to the cow that started it all for Cole and Alex's partnership Tehama Blackcap N577. Good cattle never go out of style and this Smokehouse daughter has some tremendous cows in her lineage. PE to Bear Mtn Covert (AAA 21036953). Confirmed safe, due approximately mid October.

**23** E/T *Blackbird* 485

ANGUS BRED HEIFER  
Reg 21272117  
DOB: 10/07/24  
Tattoo: 485

Sire **SAV JESSE JAMES 0968**  
S AV Renovation 6822  
S AV Blackcap May 8961

Dam **E/T BLACKBIRD 117**  
S AV Rainfall 6846  
E/T Blackbird 1902

CED	BW	WW	YW	SC	HP	Milk	DOC	Claw	Angle
+4	+3.1	+71	+119	+0.94	+10.1	+17	+12	+0.34	+0.34
Marb	RE	\$M	\$B	\$C					
+0.67	+0.66	+52	+152	+249					

**BROUGHT TO YOU BY ET FARMS**

I bet you can scroll through this catalog and see what we think of the Jesse James daughters. He can stamp them with a beautiful look and a maternal build. Blackbird 485 was produced by a beautiful SAV Rainfall daughter that is backed by one of the really good daughters of the Cavalry X 3103 mating. The Blackbird cattle from this particular line are some growing machines. They can hang with the best of the best from a performance standpoint. PE to Bear Mtn Covert (AAA 21036953). Confirmed safe, due approximately mid October.

**21** E/T *Eisa Erica* 2405

ANGUS BRED HEIFER  
Reg 21272140  
DOB: 08/06/24  
Tattoo: 2405

Sire **SS NIAGARA Z29**  
Hoover Dam  
Jet S S X144

Dam **GRETSCH EISA ERICA 3015**  
Sitz Upward 307R  
Gretsch Eisa Erica 9034

CED	BW	WW	YW	SC	HP	Milk	DOC	Claw	Angle
+4	+2.8	+96	+164	+0.87	+10.6	+23	+25	+0.51	+0.40
Marb	RE	\$M	\$B	\$C					
+0.22	+1.03	+57	+148	+249					

**BROUGHT TO YOU BY ET FARMS**

There is some kind of jinx on me and my photographer lady. The cattle produced by Eisa Erica 3015 have not been the most cooperative in the sale pens. They do not act crazy or bad they just are little shy at getting their photo taken. A full brother to 2405 was one of our favorite bulls in the 2022 Cowboy Logic sale that was purchased by some of the finest folks in this land in our opinion The Tiedeman Family. Guess what that bull didn't have a picture in the sale catalog that year either and probably saved Jake Tiedeman a couple thousand dollars because of it. That bull became E/T Solid Ground and has done a phenomenal job for those that have utilized his genetics. Eisa Erica 3015 never misses and here is your opportunity to buy a young direct daughter of hers. PE to Bear Mtn Covert (AAA 21036953). Confirmed safe, due approximately early October.

**24** E/T *Lady* 463

ANGUS BRED HEIFER  
Reg 21272136  
DOB: 09/21/24  
Tattoo: 463

Sire **SAV JESSE JAMES 0968**  
S AV Renovation 6822  
S AV Blackcap May 8961

Dam **LIMESTONE LADY 109**  
Square B True North 8052  
Musgrave Lady 1315-912

CED	BW	WW	YW	SC	HP	Milk	DOC	Claw	Angle
+5	+0.6	+55	+94	+0.41	+11.2	+23	+11	+0.33	+0.40
Marb	RE	\$M	\$B	\$C					
+0.45	+0.67	+90	+113	+237					

**BROUGHT TO YOU BY ET FARMS**

Here is a calving ease, maternal dream come true kind of female. She is out of a hard working True North daughter that stems from one of the greatest cow lines to ever call Musgrave Angus home. It is a great time to invest in young, performance driven, well documented Angus seedstock. Young Angus females may be the most bang for your buck in the industry at the moment. Lady 463 ranks in the top 10% for \$EN an important efficiency index that we believe will become more relevant as input cost rise. She is safe to the Blockade son backed by our Burgess 028 donor owned with Claylick Run Cattle. PE to E/T Blockade 4104 (AAA 21272128). Confirmed safe, due approximately late September.

# Bred Heifer

Division



Lot 25

## 25 Potts Bros *Henrietta* 4104

ANGUS  
BRED HEIFER  
Reg 21197563  
DOB: 10/10/24  
Tattoo: 4104

Sire SAV Checkmate 8158  
**OLEO CHECK SCORE 177J**  
Oleo Burgess 777  
Musgrave Thriller  
Dam **POTTS BROS HENRIETTA 2266**  
Potts Bros Henrietta 0105



CED	BW	WW	YW	SC	HP	Milk	DOC	Claw	Angle
+3	+2.3	+66	+112	+0.56	+9.3	+26	+10	+0.33	+0.47
Marb		RE		\$M		\$B		\$C	
+0.52		+0.71		+57		+120		+213	

### BROUGHT TO YOU BY POTTS BROS FARM

We absolutely loved Check Score when he was purchased out of The Source sale in 2022. He was injured at a young age so we did not get to see his full potential. His daughters are sweet cattle. Good looking, correctly built cattle with added look and a feminine appearance. Also note the Thriller females may be as good of females at Potts Bros Farm. They just flat get the job done.

Aled to Sitz Program on 11/15/25, due to calve August 24, 2026, and PE to 7 E G Free Mason L263 (AAA 20911272) 12/9/25-2/3/26. Confirmed Safe AI.



Shday Brook Beauty 7022  
Donor dam of Lot 27

## 27 Potts Bros *Beauty* 428P

ANGUS  
BRED HEIFER  
Reg 21217668  
DOB: 10/09/24  
Tattoo: 428P

Sire SAV Rainfall 6846  
**SQUARE B ATLANTIS 8060**  
Elbanna of Conanga 1209  
S AV Resource 1441  
Dam **SHADY BROOK BEAUTY 7022**  
JLM Beauty Beauty 5056



CED	BW	WW	YW	SC	HP	Milk	DOC	Claw	Angle
+3	+1.2	+61	+102	+0.82	+18.0	+25	+16	+0.31	+0.38
Marb		RE		\$M		\$B		\$C	
+0.37		+0.67		+92		+103		+226	

### BROUGHT TO YOU BY POTTS BROS FARM

We purchased some embryos from Vince and company from the historic Shady Brook program. The mother of 428P is a true powerhouse. She is three dimensional in every sense of the term. We sold a full brother to this Beauty bred heifer in this past years Cowboy Logic bull sale that was a highlight individual. We appreciate the Atlantis and True North daughters more and more every day. They are slick haired cattle that work hard in our world and provide value to their respective herds. Check it out she is bred to Partisover Deep Roots you know that baby is gonna be a Beauty.

Aled to Partisover Deep Roots 126 on 11/17/25, due to calve August 26, 2026, and PE to 7 E G Free Mason L263 (AAA 20911272) 12/9/25-2/3/26. Confirmed Safe AI.

## 26 Potts Bros *Emblynette* 4018

ANGUS  
BRED HEIFER  
Reg 21201601  
DOB: 08/09/24  
Tattoo: 4018

Sire Sitz Barricade 632F  
**4M BLOCKADE 120**  
EF Everelda Entense 2421  
S Powerpoint WS 5503  
Dam **EA EMBLYNETTE 7045**  
EA Emblynette 5652



CED	BW	WW	YW	SC	HP	Milk	DOC	Claw	Angle
-2	+4.3	+69	+122	+1.48	+12.7	+24	+10	+0.41	+0.39
Marb		RE		\$M		\$B		\$C	
+0.55		+0.68		+86		+156		+288	

### BROUGHT TO YOU BY POTTS BROS FARM

Kyle Potts and Todd Alford often talk about building the perfect cow in their opinions for the climate they live in. They both continue to believe they need to add some dimension and base width to the Angus gene pool surrounding our genetics. Kyle is on a mission to produce an incredible set of females that will set him up for years of success. Here is a power female from a power cow. She is bred to calve early fall to AAR Augusta. He is going do big things at PBF.

Aled to AAR Augusta on 11/16/25, due to calve August 25, 2026, and PE to AAR Augusta (AAA 21149817) 12/9/25-2/3/26. Confirmed Safe AI.



Lot 28

# E/T Blackbird 476

**28** E/T Blackbird 476

ANGUS  
BRED HEIFER  
Reg 21144289  
DOB: 09/29/24  
Tattoo: 476

Sire Square B True North 8052  
**E/T NORTH JACKSON 125**  
E/T Forever Lady 173  
JVC Cavalry V3326  
Dam **E/T BLACKBIRD 1905**  
Deer Valley Blackbird 3103



CED	BW	WW	YW	SC	HP	Milk	DOC	Claw	Angle
+4	+1.4	+76	+122	+1.42	+13.4	+26	+25	+0.48	+0.52
Marb	RE	\$M	\$B	\$C					
+0.34	+0.78	+87	+121	+244					

BROUGHT TO YOU BY D & D CATTLE CO.

*We* like a good ole dose of home cooking in the south. There is nothing better than sitting around the dinner table partaking in that good home cooking. Now what does that have to do with Blackbird 476 you may ask. Her pedigree is what we consider home cooking. She is sired by one of the highly admired calving ease prospect to ever come out of the E/T program and is produced by one of the great sisters from the outcross mating of Cavalry to Blackbird 3103. You want a little more home cooking she is safe to SAV Conviction 3010, owned by the D and D boys and Kuck Ranch of Bertrand, NE, who is a full brother to the great SAV Courage 3003. Sounds like home-made ice cream, apple pie and sweet tea here fellas. Dig in!

Bred to SAV Conviction 3010 (AAA 20761397). Due approximately early October.



**E/T Blackbird 1905**  
Dam of Lot 28



**SAV Conviction 3010**  
D&D herdsire and service sire of Lots 28-32

# Bred Heifer

## Division

LOTS 29-35  
BROUGHT TO YOU  
BY D & D CATTLE CO.



Lot 29



E/T Blackcap 703G  
Dam of Lot 29



Potts Bros Primrose 8035  
Maternal granddam of Lot 30



ACE Burgess 512  
Maternal granddam of Lot 31



Potts Bros Fanny 2230  
Dam of Lot 32

### 29 D&D Blackcap 405

ANGUS  
BRED HEIFER

Reg 21205999  
DOB: 09/30/24  
Tattoo: 405

Sire **E/T GROWTH FUND 243**  
Deer Valley Growth Fund  
E/T Eisa Erica 032  
S AV Momentum 9274  
Dam **E/T BLACKCAP 703G**  
E/T Meldon Blackcap 094



CED	BW	WW	YW	SC	HP	Milk	DOC	Claw	Angle
+1	+3.7	+83	+135	+1.50	+13.0	+32	+3	+0.52	+0.48
Marb	RE	\$M	\$B	\$C					
+0.27	+0.66	+66	+145	+254					

Blackcap 405 is a high-performance female backed by one of the great maternal cows in the E/T program Blackcap 094. 094 to this day was one of the most captivating animals we have ever had the chance to market and represent. She was absolutely stunning and would work well to SAV Momentum over the next decade. The sire of 405 was D and D pick of the 2023 Cowboy Logic event and has sired some nice stock. Bred to SAV Conviction 3010 (AAA 20761397). Due approximately late October.

### 31 D&D Burgess 406

ANGUS  
BRED HEIFER

Reg 21206000  
DOB: 10/03/24  
Tattoo: 406

Sire **E/T GROWTH FUND 243**  
Deer Valley Growth Fund  
E/T Eisa Erica 032  
Tehama Tahoe B767  
Dam **BAR A BURGESS 141J**  
ACE Burgess 512



CED	BW	WW	YW	SC	HP	Milk	DOC	Claw	Angle
+4	+1.6	+75	+141	+1.24	+15.1	+31	+20	+0.50	+0.55
Marb	RE	\$M	\$B	\$C					
+0.26	+0.98	+56	+152	+253					

The dam of Burgess 406 is a full sister to the Lot 2 female in this event. Mixing Growth Fund and Tahoe with the Burgess cow line is going to produce high growth cattle in a moderate sized package with excellent maternal ability. Check out the rapid early growth and 10% HP stats on this young Burgess female. Bred to SAV Conviction 3010 (AAA 20761397). Due approximately mid November.

### 30 Potts Bros Primrose 4099

ANGUS  
BRED HEIFER

Reg 21108054  
DOB: 10/03/24  
Tattoo: 4099

Sire **S AV CAPTIVATE 2410**  
S AV Certified 0849  
S AV Erica 7514  
Musgrave Thriller  
Dam **POTTS BROS PRIMROSE 0114**  
Potts Bros Primrose 8035



CED	BW	WW	YW	SC	HP	Milk	DOC	Claw	Angle
+3	+2.4	+77	+135	-0.17	+9.4	+33	+21	+0.36	+0.34
Marb	RE	\$M	\$B	\$C					
+0.20	+0.71	+73	+137	+251					

SAV Captivate 2410 was a good days work when Kyle Potts snuck him out at SAV for a very reasonable figure. He is a dense made, heavy structured animal with tremendous Angus breed character. Potts has weaned another set of his daughters and they are big bodied, easy fleshing with a mama cow look. 4099 is backed by a super Thriller daughter and is safe to Conviction. Bred to SAV Conviction 3010 (AAA 20761397). Due approximately late November.

### 32 Potts Bros Fanny 4117

ANGUS  
BRED HEIFER

Reg 21097067  
DOB: 10/31/24  
Tattoo: 4117

Sire **E/T UNDISPUTED 220**  
Myers Fair-N-Square M39  
E/T Barbara 827  
S AV Jesse James 0968  
Dam **POTTS BROS FANNY 2230**  
SJH Confidence of 9360 2682



CED	BW	WW	YW	SC	HP	Milk	DOC	Claw	Angle
+0	+3.8	+72	+129	+0.65	+10.5	+26	+23	+0.35	+0.30
Marb	RE	\$M	\$B	\$C					
+0.52	+0.60	+66	+126	+229					

The dam of 4117 is flat jack good. She is captivating in appearance and works hard in the pasture. As we get more and more Jesse James daughters in production, we are reminded why we loved that bull so much on that frigid cold day at Schaff Angus Valley in 2021. Those females are getting after it. Another bred female safe to Conviction. Bred to SAV Conviction 3010 (AAA 20761397). Due approximately late October.



**Potts Bros Blackbird 2217**  
Dam of Lot 33



**Yon Hazel L171**  
Dam of Lot 34



**Lot 33**

**33** D&D *Blackbird* 402

ANGUS  
BRED HEIFER  
Reg 21210788  
DOB: 09/06/24  
Tattoo: 402

Sire **Sitz Stellar 726D**  
**COLEMAN BELOW ZERO 2106**  
Coleman Donna 0153  
Dam **Square B True North 8052**  
**POTTS BROS BLACKBIRD 2217**  
Potts Bros Blackbird 603



CED	BW	WW	YW	SC	HP	Milk	DOC	Claw	Angle
+3	+0.4	+72	+134	+0.34	+11.3	+30	+28	+0.32	+0.35
Marb		RE		\$M		\$B		\$C	
+0.31		+0.61		+81		+122		+239	

We realize it gets redundant when we talk so much about their mothers and pedigrees in these footnotes. We wouldn't do so if we did not believe so much in the mama cow. There is power in the blood in this young female. Her dam would have been a past high seller in a previous From the Ground Up event and is backed by the potent Potts Bros Blackbird 603 cow. If you want a female with the who's who of maternal genetics laced in Blackbird 402 should be on your short list. Aled to LD Capitalist 316 on 11/10/25, due to calve August 20, 2026. Confirmed Safe AI.



**Partisover Burgess 863**  
Donor dam of Lot 35

**34** D&D *Hazel* 401

ANGUS  
BRED HEIFER  
Reg 21210881  
DOB: 08/19/24  
Tattoo: 401

Sire **KG Justified 3023**  
**BEAR MTN JUSTIFY**  
Bear Mtn Judy 3092  
Dam **Myers Fair-N-Square M39**  
**YON HAZEL L171**  
Yon Hazel F875



CED	BW	WW	YW	SC	HP	Milk	DOC	Claw	Angle
+7	+0.3	+74	+113	+1.34	+10.2	+25	+17	+0.64	+0.50
Marb		RE		\$M		\$B		\$C	
+0.56		+0.45		+79		+105		+215	

Our Fair-N-Square daughters have been some of the best in the respective programs in this event. They are heavy milking females that will inject performance in a well-built skeleton. Add on the layer of Bear Mtn Justify and we promise these cattle will work hard for your program. Backed by one of the long-standing cow families to thrive in the Yon program, Hazel 401 is built to last. Aled to BCC Rapport on 11/10/25, due to calve August 20, 2026. Confirmed Safe AI.

**35** Salacoa *Burgess* 4035

ANGUS BRED  
HEIFER  
Reg 21226021  
DOB: 10/02/24  
Tattoo: 4035

Sire **KG Justified 3023**  
**POTTS BROS TEMPO 2208**  
Potts Bros Blackbird 9003  
Dam **Musgrave Sky High 1535**  
**PARTISOVER BURGESS 863**  
Partisover Burgess B443



CED	BW	WW	YW	SC	HP	Milk	DOC	Claw	Angle
+13	-1.4	+41	+77	+0.31	+12.6	+28	+11	+0.55	+0.54
Marb		RE		\$M		\$B		\$C	
+0.66		+0.27		+65		+106		+202	

The more Tempo progeny we get to see at Salacoa Cattle the more we like them. There are several sons of Tempo that will be at the top of the list in Brad Cox's bull pen. This young, bred heifer is safe up early to SAV Smokehouse and is backed by one burly female that now resides at Smith Brothers Land and Cattle in Pavo, GA. Jody and J Ben selected Burgess 863 from last year's sale, and we have admired their program for year and appreciate their business. This high calving ease, low birth weight female is super smooth made and way docile. Aled to SAV Smokehouse 2889 on 11/10/25, due to calve August 20, 2026. Confirmed Safe AI.

**BRED HEIFERS BACKED BY TRUE COW POWER!**

# Females with *D*igits



Lot 37



**Yon Hazel H395**  
Dam of Lot 36



**Yon Burgess K544**  
Dam of Lot 37, pictured as a calf.

## 36 Yon Hazel N326

ANGUS  
BRED HEIFER  
Reg 21055085  
DOB: 09/24/24  
Tattoo: N326

Sire **BALDRIDGE HEAT SEEKER H925**  
Mill Brae Identified 4031  
Baldrige Isabel E048  
Dam **YON HAZEL H395**  
BUBS Southern Charm AA31  
Yon Hazel B156



CED	BW	WW	YW	SC	HP	Milk	DOC	Claw	Angle
+9	+0.6	+70	+120	+1.89	+12.2	+32	+8	+0.33	+0.41
Marb	RE	\$M	\$B	\$C					
+1.17	+0.69	+90	+189	+335					

BROUGHT TO YOU BY D & D CATTLE CO.

Here is a little different twist for our event. Check out the balanced trait EPD profile on this young Heat Seeker daughter. Her dam is one stout lady. We have grown fond of the Southern Charm daughters as they mature and continue to produce high value cattle that are sought after by the public. Here is a high maternal female with a top 5% Claw, top 20% Angle, top 25% Marb stats along with top 10% \$M and top 20% \$C indices.

Bred to SAV Conviction 3010 (AAA 20761397). Due approximately early November.

## 37 Shirley Milner Burgess N562

ANGUS  
OPEN HEIFER  
Reg 21558092  
DOB: 04/14/25  
Tattoo: N562

Sire **STELLPLUG HOFFMAN RISEABOVE**  
Hoffman Stagecoach 1908  
Hoffman 3210 Rita Lady 0256  
Dam **YON BURGESS K544**  
Yon Top Cut G730  
Yon Burgess H985



CED	BW	WW	YW	SC	HP	Milk	DOC	Claw	Angle
+5	+2.8	+99	+156	+99	+13.1	+25	+23	+0.31	+0.39
Marb	RE	\$M	\$B	\$C					
+1.37	+1.08	+120	+210	+393					

BROUGHT TO YOU BY SHIRLEY & MILNER ANGUS

When Matt Shirley brings you, a performance bred female that has never seen a rope halter you can bet she going to be a good animal. N562 is a super stout made female with added bone and power. She has great big feet and a three-dimensional build that screams she could raise power bulls for the commercial sector. Check out her balanced approach of calving ease, growth, and carcass merit. She is a shade over 1.3 for Marb, Top 2% in the breed for \$C, and is backed by one of the oldest cow families in the Yon program that would have originated from the astute Partisover herd some 30 plus years ago and traces to the legendary Partisover Burgess 901. This female sells open ready to breed to the sire of your choice. Sells open ready to breed or flush.

# FROZEN Genetics

## 38 RSA True Balance 1311 x Yon Sarah K653 Embryos

SELLING 3 CONVENTIONAL EMBRYOS

Sire **G A R Home Town**  
**RSA TRUE BALANCE 1311**  
RSA Forever Lady 9204

Dam **SG Salvation**  
**YON SARAH K653**  
Yon Sarah D668

	CED	BW	WW	YW	SC	HP	Milk	DOC	Claw	Angle
Dam_Sire	+14	+2	+76	+134	+1.41	+10.4	+33	+14	+51	+43
Dam_Sire	+7	+7	+71	+122	+40	+13.3	+25	+27	+42	+49
	Marb	RE	\$M	\$B	\$C					
Dam_Sire	+2.01	+95	+85	+258	+420					
Dam_Sire	+1.87	+77	+80	+233	+382					



**Yon Sarah K653**  
Lot 38 Donor



**Yon Top Cut G730**  
Maternal Brother to K653



**Yon Silverstreet**  
Maternal Brother to K653



**Yon Premium**  
Maternal Brother to K653



**Yon Saluda**  
Maternal Brother to K653



**RSA True Balance 1311**  
Sire of Lot 38 embryos

BROUGHT TO YOU BY MATT SHIRLEY, SEIXAS MILLNER III, AND COLE ELROD

These frozen gems are a unique twist to From The Ground Up event. Last year our friend and President of the GA Angus Association, Ian McClure purchased a set of these embryos. Recently Ian sold a baby calf for \$17,500 from those embryos. Congrats Ian! The Yon family has been super successful at creating cattle that work extremely well across the nation. The two year old donor dam of this mating was selected by a group of talented young cowboys that knew what they were looking at when she was 3 months old. Sarah K653 was the \$40,000 selection of Matt Shirley, Seixas Millner and Cole Elrod to lead off the Spring 2022 Yon Female division. She is a maternal sister to the wildly popular Select Sires superstar Yon Top Cut that has nearly 2000 registered progeny with records at American Angus. Another maternal brother to K653 is the young stud Yon Saluda that has nearly 150 calves already born at Yon Family Farms. Saluda is one of the few bulls in the breed that combine his level of performance with huge scrotal EPD, high levels of maternal traits and top 1% Hair Shed stat. The dam of K653 is a powerhouse maternal female that has blessed the Yon Family and others who have invested in her genetics. In the Fall of 2021 a maternal sister to K653 sold for \$35,000 to Edisto Pines and San Jose River Farm. Another maternal sister to K653 and full sister to Saluda was a personal favorite of the fall 2022 sale that bring \$20,000 to De-Su Angus. Poss Angus rounds up another popular maternal brother to K653 for \$35,000 to become known around the country as Yon Silverstreet. Yet another full brother to Saluda and Silverstreet is Yon Premium owned by Mark Wilburn as a highlight of the incredible flush of brothers that sold in the fall of 2022.

Selling 3 conventional embryos guaranteeing 1 pregnancy if implanted by a certified technician.

## 39A Easy Decision x Yon Erroline H178 Embryos

SELLING 3 CONVENTIONAL EMBRYOS

Sire **Coleman Rock 7200**  
**COLEMAN EASY DECISION 1539**  
Coleman Donna 7386

Dam **BUBS Southern Charm AA31**  
**YON ERROLINE H178**  
Yon Erroline E464

## 39B Rapport x Yon Erroline H178 Embryos

SELLING 3 CONVENTIONAL EMBRYOS

Sire **Square B True North 8052**  
**BCC RAPPORT**  
BCC Everelda Entense 58J

Dam **BUBS Southern Charm AA31**  
**YON ERROLINE H178**  
Yon Erroline E464

BROUGHT TO YOU BY OLEO RANCH

We absolutely dig the donor dam of this mating. She has been a blessing to Oleo Ranch in her short tenure at our place. Erroline H178 is our kind of female. She's not the biggest cow on the place but she can pack some punch with excellent muscle shape and base width. Her feet are incredible, and her production capability matches our environment well. Her udder is near perfect. Her progeny has been well received when offered up to the public. Her sons and daughters have averaged a shade over \$10,000 when auction off or sold privately. We currently have a nice set of spring babies on the ground out of H178. Take your choice of the sires represented here. We have always admired the Coleman herd and appreciate what Larry and Dee along with Jeremy and Jenny have done for the breed. We think Easy Decision or BCC Rapport could create tremendous females out of H178 and make calving ease sons that are easy to sell. It's a win, win situation from an outcross cow line that flat works. Selling 3 conventional embryos guaranteeing 1 pregnancy if implanted by a certified technician.



**Yon Erroline H178**  
Lot 39 Donor



**Coleman Easy Decision 1539**  
Sire of Lot 39A embryos



**BCC Rapport**  
Sire of Lot 39B embryos

# Fall Pairs



Lot 40

## The Kaylee's

BROUGHT TO YOU BY BROAD RIVER FARM

It is sometimes comical how things come full circle. Miss Kaylee 8116 is a product of super sweet SAV Brave daughter that we sold the BRF crew ten years ago now. Her granddam was one of the first Angus females Potts Bros Farm purchased from us. The Kaylee cow line has done wonders for Meldons Farms in Jefferson, GA and brings back memories of showing performance bred cattle in the show ring and being competitive without all the big hair. 8116 is our kind of cattle. She will stay in good flesh all year, raises a big baby, is moderate in stature but will be with you when times get tough. She is raising a nice big bodied, bold ribbed heifer baby at her side.

Lot 40 was PE to MR BRF Alternative 315 (AAA 21392868). Safe in calf due approximately November 10, 2026 with a HEIFER calf.

From the Ground Up | 5.9.2026

### 40 BRF Miss Kaylee 8116

ANGUS BRED COW  
 Reg 19655858  
 DOB: 10/09/18  
 Tattoo: 8116

Sire **SAV RESOURCE 1441**  
 Rito 707 of Ideal 3407 7075  
 SAV Blackcap May 4136

Dam **OLEO KAYLEE 208Z**  
 SAV Brave 8320  
 Meldons Kaylee 930

CED	BW	WW	YW	SC	HP	Milk	DOC	Claw	Angle
+4	+3.3	+65	+114	+0.76	+7.2	+26	+17	+0.46	+0.44
Marb		RE		\$M		\$B		SC	
+0.21		+0.91		+39		+127		+204	

### 40A Miss BRF Kaylee 5232

ANGUS OPEN HEIFER  
 Reg 21552424  
 DOB: 11/15/25  
 Tattoo: 5232

Sire **THOMAS CONFEDERATE 0705**  
 E&B Confederate 507  
 Thomas Lucy Rose 8629

Dam **BRF MISS KAYLEE 8116**  
 SAV Resource 1441  
 Oleo Kaylee 208Z

CED	BW	WW	YW	SC	HP	Milk	DOC	Claw	Angle
+5	+3.1	+67	+116	-	-	+26	-	-	-
Marb		RE		\$M		\$B		SC	
+0.63		+0.74		+58		+150		+253	

# The Blackcap's

BROUGHT TO YOU BY BROAD RIVER FARM

Jacob, Austin, Wayne, and Carrie have a lot going on. If you want to ride around with a crew that is invested in diversified agriculture in North, Ga they would love to show you around. The cattle at Broad River Farm must be practical, low maintenance, problem free cattle because there are plenty of them and not a huge labor force to get everything done. They purchased a several groups of cows from Thomas Angus Ranch to build a base of mama cows. The Thomas cows have done well in this country and have lived up to their expectation. Blackcap 9693 is built for speed. She is long, level designed, forage efficient and has a sweet udder attachment. 9693 is nursing a beautiful fall heifer calf by Iconic. Good cattle never go out of style.

Lot 41 was PE to MR BRF Alternative 315 (AAA 21392868). Safe in calf due approximately November 10, 2026.




Lot 41

**41** Thomas *Blackcap* 9693

ANGUS BRED COW  
Reg 19739587  
DOB: 08/01/19  
Tattoo: 9693

Sire **JINDRA ACCLAIM**  
Jindra 3rd Dimension  
Jindra Blackbird Lassie 1111

Dam **THOMAS BLACKCAP 3731**  
Connealy Confidence 0100  
Thomas Blackcap 8925




CED	BW	WW	YW	SC	HP	Milk	DOC	Claw	Angle
+6	+0.3	+60	+109	-0.10	+10.2	+29	+18	+0.51	+0.48
Marb		RE		\$M		\$B		\$C	
+0.71		+0.30		+46		+148		+238	

**41A** Miss BRF *Blackcap* 5190

ANGUS OPEN HEIFER  
Reg 21552425  
DOB: 10/19/25  
Tattoo: 5190

Sire **DB ICONIC G95**  
Musgrave 316 Stunner  
DB Ms Discovery D13

Dam **THOMAS BLACKCAP 9693**  
Jindra Acclaim  
Thomas Blackcap 3731



CED	BW	WW	YW	SC	HP	Milk	DOC	Claw	Angle
+7	+0.9	+74	+131	+0.69	+10.7	+27	+21	+0.55	+0.49
Marb		RE		\$M		\$B		\$C	
+1.23		+0.29		+51		+170		+271	

# Fall

## Pairs



**Partisover Burgess 846**

Dam of Lot 42 & 43



**Partisover Burgess 825**

Full sister to the dam of Lot 42 & 43.  
Owned by Shoal Creek Land & Cattle

# The Burgess

BROUGHT TO YOU BY SALACOA CATTLE COMPANY

Brad allowed us to sneak a couple direct daughters of the great Partisover Burgess 846 in this event. Burgess 846 is a member of one of the greatest sets of sisters to ever graze the luxurious pastures in Colbert, GA. The Sky High x Partisover Burgess 133 sisters are responsible for more donor production than one can tally. The sisters include the \$26,000 Burgess 825 selected by Shoal Creek Simmental from our 2023 sale. Burgess 843 that has made her way from GA to NE and back to GA and just commanded \$19,000 as a mature female. Burgess 8383 which is one potent producer in the Salacoa Cattle program is yet another sister from this mating. Both females in this event are sired by the Pathfinder cow maker Select Sires phenom SAV Rainfall 6846. If you know Brad Cox you know he loves the Burgess cow family. He has built a program full of them in the Salacoa Valley of Waleska, GA. Both calves nursing these young cows are sired by E/T Custom Built 367 a resident herdsire in the Salacoa program that is creating good livestock.

Lot 42 and Lot 43 were PE to ACE Aspire 505 12/7/25-3/6/26.

**42** PRT Salacoa *Burgess* 384

ANGUS BRED COW  
Reg 20529019  
DOB: 10/01/22  
Tattoo: 384

Sire **SAV RAINFALL 6846**  
Coleman Charlo 0256  
SAV Blackcap May 4136

Dam **PARTISOVER BURGESS 846**  
Musgrave Sky High 1535  
Partisover Burgess 133

CED	BW	WW	YW	SC	HP	Milk	DOC	Claw	Angle
+4	+2.5	+65	+123	+1.08	+8	+32	+12	+0.34	+0.38
Marb	RE	\$M	\$B	\$C					
+0.56	+0.78	+48	+142	+232					

**43** PRTY Salacoa *Burgess* 389

ANGUS BRED COW  
Reg 20529018  
DOB: 10/03/22  
Tattoo: 389

Sire **SAV RAINFALL 6846**  
Coleman Charlo 0256  
SAV Blackcap May 4136

Dam **PARTISOVER BURGESS 846**  
Musgrave Sky High 1535  
Partisover Burgess 133

CED	BW	WW	YW	SC	HP	Milk	DOC	Claw	Angle
+6	+2.4	+65	+125	+0.98	+7.3	+29	+16	+0.4	+0.42
Marb	RE	\$M	\$B	\$C					
+0.63	+0.78	+39	+152	+236					

**42A** Salacoa *Custom Built* 5058

ANGUS BULL CALF  
Reg 21544428  
DOB: 12/03/25  
Tattoo: 5058

Sire **E/T CUSTOM BUILT 367**  
Partisover Deep Roots 126  
E/T Eisa Erica 825

Dam **PRT SALACOA BURGESS 384**  
SAV Rainfall 6846  
Partisover Burgess 846

CED	BW	WW	YW	SC	HP	Milk	DOC	Claw	Angle
+6	+1.5	+70	+127	+0.86	+10.7	+29	+15	+0.42	+0.39
Marb	RE	\$M	\$B	\$C					
+0.61	+0.88	+73	+157	+277					

**43A** Salacoa *Burgess* 5063

ANGUS OPEN HEIFER  
Reg 21544430  
DOB: 12/28/25  
Tattoo: 5063

Sire **E/T CUSTOM BUILT 367**  
Partisover Deep Roots 126  
E/T Eisa Erica 825

Dam **PRTY SALACOA BURGESS 389**  
SAV Rainfall 6846  
Partisover Burgess 846

CED	BW	WW	YW	SC	HP	Milk	DOC	Claw	Angle
+7	+1.4	+70	+128	+0.81	+10.4	+28	+17	+0.45	+0.41
Marb	RE	\$M	\$B	\$C					
+0.64	+0.88	+68	+162	+278					

# ACE *Aspire* 505

## SEMEN LOTS

BROUGHT TO YOU BY SALACOA CATTLE COMPANY



ACE *Aspire* 505  
Lot 44 Herdsire



**Partisover Burgess 080**

The legendary dam of ACE Aspire 505



**Partisover Burgess 843**

Maternal granddam of ACE Aspire 505

**44**

### ACE *Aspire* 505

ANGUS  
BULL

Reg 21283038  
DOB: 10/12/24  
Tattoo: 505

Sire **STELLPLUG HOFFMAN RISEABOVE**  
Hoffman 3210 Rita Lady 0256  
Musgrave 316 Stunner  
Dam **PARTISOVER BURGESS 080**  
Partisover Burgess 843



CED	BW	WW	YW	SC	HP	Milk	DOC	Claw	Angle
+12	+0.6	+88	+137	+1.46	+10.4	+30	+10	+0.36	+0.36
Marb	RE	\$M	\$B	\$C					
+0.86	+0.71	+95	+167	+312					

What a privilege we have in the chance to market the first semen sold on ACE Aspire 505. Brad Cox at Salacoa Cattle Company is on a mission to put together an elite herd of Angus cattle. He is an astute businessman and a great gentleman. His cow base has mostly been acquired from Partisover Ranch, Potts Brothers Farm, and Elrod and Tolbert. Brad likes cattle that are stout featured, bold ribbed, big bodied, easy fleshing, and built to work in the South. He has spared little expense in procuring the best donors and sires he can to suit his taste. Let us introduce to you ACE Aspire 505. He is a Rise Above son that we think is a neat creature. He has added substance, a big flexible back leg, a herd bull presence, a huge pliable rib cage, a great foot, and is backed by a phenomenal cow. He checks as many boxes as any bull we had the opportunity to see last fall. His dam is a true power cow, his granddam is a beast. Aspire is a calving ease bull with punch. His EPD profile is solid and balanced. He is built right for the times.

SELLING 50 UNITS OF SEMEN

**This is the only semen that will be sold this spring on Aspire.**

CONNECTING GREAT PEOPLE WITH ELITE CATTLE!



Lot 45

Oleo Burgess 951G

## Burgess Sisters

45

Oleo Burgess 376L

ANGUS  
BRED COW  
Reg 21080284  
DOB: 03/10/23  
Tattoo: 376L

Sire Poss Achievement  
**SITZ ACCOMPLISHMENT 720F**  
Sitz Barbaramere Nell 166D  
Dam TEX Playbook 5437  
**OLEO BURGESS 951G**  
Eddins Burgess 80



CED	BW	WW	YW	SC	HP	Milk	DOC	Claw	Angle
+8	+1.5	+76	+130	+0.99	+15.7	+25	+21	+0.49	+0.42
Marb	RE	\$M	\$B	\$C					
+0.32	+0.63	+97	+119	+251					

Aled to AAR Midas on 11/18/25, due to calve August 28, 2026. Confirmed Safe AI with a HEIFER calf.

45A

Oleo Burgess 541N

ANGUS  
OPEN HEIFER  
Reg 21525425  
DOB: 09/30/25  
Tattoo: 541N

Sire Square B True North 8052  
**BCC RAPPORT**  
BCC Everelda Entense 58J  
Dam TEX Playbook 5437  
**OLEO BURGESS 951G**  
Eddins Burgess 80



CED	BW	WW	YW	SC	HP	Milk	DOC	Claw	Angle
+12	-0.7	+64	+112	+1.31	+11.6	+37	+26	+0.19	+0.41
Marb	RE	\$M	\$B	\$C					
+1.13	+0.57	+112	+137	+290					



Oleo Double Move 451M

Maternal brother to Lot 45 & 45A  
Owned by Kempfer Cattle Co. in Florida

BROUGHT TO YOU BY OLEO RANCH

The Burgess cows have definitely paid the bills at Oleo Ranch. They may not be the best cattle in the world, but they are the best cattle to fit our management system and our environment. The dam of both females is one of our favorite cows. Burgess 951G is a stunning female that pours her life into raising a big stout baby each year. 951G is has been conventionally flushed multiple years and has bred back to have a fall baby with her contemporaries each year. Burgess 376L is a bigger outlined, high-performance female that is big hiped and wide pinned. She has a sweet, angular front end and that whale belly we dig. She sells with a HEIFER calf in utero by AAR Midas. The fall heifer calf is sired by the young super star BCC Rapport and is the easiest going, most friendly heifer calf you could ever imagine. You can rub all over her in the pasture. Highly maternal cattle backed by tremendous cows in the pedigree. Their grand dam works for Wesley and Cody Sparks and is a past high seller in this event. The great granddam is the legendary Partisover Burgess 133.

## 46 PRTY Salacoa Burgess 3114

ANGUS  
BRED COW  
Reg 20529013  
DOB: 10/17/22  
Tattoo: 3114

Sire **CONNEALY CONFIDENCE PLUS**  
**PARTISOVER CONFID PLUS 953**  
Partisover Burgess 508  
Sire **SAV PRIVILEGE 3030**  
Dam **PARTISOVER BURGESS 676**  
Partisover Burgess 763



CED	BW	WW	YW	SC	HP	Milk	DOC	Claw	Angle
+6	+1	+61	+106	-	-	+26	-	-	-
Marb	RE	\$M	\$B	\$C					
+0.4	+0.49	+57	+126	+220					

BROUGHT TO YOU BY SALACOA CATTLE COMPANY  
We got little more home cooking going on in the Burgess 3114 female. She is double bred Burgess being out of a son of the great Partisover Burgess 508 and backed by Burgess females on the bottom side as well. This coming four-year-old cow is made like a dream. She is moderate statured, big ribbed, deep flanked, and level designed. 3114 has a lifetime in front of her and is nursing a big bull calf by Custom Built. We can't wait to get more Custom Built calves on the ground this fall. We like what we see thus far at Salacoa Cattle.

PE to ACE Aspire 505 (AAA 21283038) 12/7/25-3/5/26.

## 46A Salacoa Custom Built 5062

ANGUS  
BULL CALF  
Reg 21544429  
DOB: 12/25/25  
Tattoo: 5062

Sire **PARTISOVER DEEP ROOTS 126**  
**E/T CUSTOM BUILT 367**  
E/T Elsa Erica 825  
Sire **PARTISOVER CONFID PLUS 953**  
Dam **PRTY SALACOA BURGESS 3114**  
Partisover Burgess 676



CED	BW	WW	YW	SC	HP	Milk	DOC	Claw	Angle
+7	+0.7	+68	+118	-	-	+26	-	-	-
Marb	RE	\$M	\$B	\$C					
-	-	-	-	-					

## 47 Yon Witch J49

ANGUS  
BRED COW  
Reg 20017315  
DOB: 09/06/20  
Tattoo: J49

Sire **MUSGRAVE 316 STUNNER**  
**MUSGRAVE CRACKERJACK**  
Musgrave Rito Jet A649  
Sire **VA R LEGEND 5019**  
Dam **YON WITCH G24**  
Yon Witch E246

CED	BW	WW	YW	SC	HP	Milk	DOC	Claw	Angle
+16	-1.6	+61	+114	+1	+11	+30	+7	+0.48	+0.45
Marb	RE	\$M	\$B	\$C					
+0.66	+0.89	+75	+155	+276					

BROUGHT TO YOU BY SALACOA CATTLE COMPANY  
Yon Witch J49 is a heavy milking female with a nice heifer baby at her side. The Witch cows from the Yon program are known for being hard working cattle that are feminine, angular and display great Angus breed character. J49 is an ultra-calving ease female that ranks in the top 1% for CED and top 5% for BW EPD. Take this cow to which ever sire you choose in the Angus gene pool, and you should still have calving ease sons to sell. The sire of the heifer baby is one stout power bull from the SAV program that is turning out some deep, soggy females.

PE to Potts Bros Jump Start (AAA 20910954) 12/19/25-3/19/26.

## 47A Salacoa Witch 5060

ANGUS  
OPEN HEIFER  
Reg 21544431  
DOB: 12/18/25  
Tattoo: 5060

Sire **SAV CERTIFIED 0849**  
**SAV CALIBRATE 2186**  
SAV Bessie Heiress 5226  
Sire **MUSGRAVE CRACKERJACK**  
Dam **YON WITCH J49**  
Yon Witch G24



CED	BW	WW	YW	SC	HP	Milk	DOC	Claw	Angle
+10	+0.3	+62	+119	+1.42	+10.9	+30	+9	+0.44	+0.45
Marb	RE	\$M	\$B	\$C					
+0.43	+1.06	+68	+148	+260					

## 48 Miss BRF Jet Lady 2120

ANGUS  
BRED COW  
Reg 21552421  
DOB: 10/11/22  
Tattoo: 2120

Sire **DAMERON FIRST CLASS**  
**GCC MONEY EARNED 852E ET**  
Duff W 373 DixieErica 8137  
Sire **CONNEALY IMPRESSION**  
Dam **THOMAS JET LADY 2800**  
Thomas Jet Lady 81319



CED	BW	WW	YW	SC	HP	Milk	DOC	Claw	Angle
+4	+2.1	+57	+92	+0.71	+13.0	+20	+9	+0.52	+0.54
Marb	RE	\$M	\$B	\$C					
+0.55	+0.32	+61	+113	+208					

BROUGHT TO YOU BY BROAD RIVER FARM  
Jet Lady 2120 is a smooth made, wedge shaped female that is beautiful patterned and well designed. Her dam is a tremendous Connealy Impression female that has left the BRF crew with several nice females. This coming four-year-old cow has a lifetime of production ahead of her and would work wonders in any breeding scenario. No matter how you want to breed her in the future she'll bring a big baby to the pens at weaning time. 2120 sells safe in calf to a Simmental sire BRF MR Private Stock 327L for a SimAngus baby.

PE to BRF MR Private Stock 327L (ASA 4393870) . Due approximately mid September.

## 48A MR BRF 5201

ANGUS  
BULL CALF  
Reg Pending  
DOB: 10/22/25  
Tattoo: 5201

Sire **SITZ INCENTIVE 704H**  
**BRF MR INCENTIVE 3147**  
brf miss Lucy 820  
Sire **GCC MONEY EARNED 852E ET**  
Dam **MISS BRF JET LADY 2120**  
Thomas Jet Lady 2800

CED	BW	WW	YW	SC	HP	Milk	DOC	Claw	Angle
-	-	-	-	-	-	-	-	-	-
Marb	RE	\$M	\$B	\$C					
-	-	-	-	-					

## 49 Thomas Elsa 0716

ANGUS  
BRED COW  
Reg 19854218  
DOB: 10/09/20  
Tattoo: 0716

Sire **PLATTMERE WEIGH UP K360**  
**THOMAS BIG DATA 7435**  
Thomas Blackbird 9690  
Sire **A & B SPOTLITE 3065**  
Dam **THOMAS ELSA 7948**  
Thomas Elsa 3207

CED	BW	WW	YW	SC	HP	Milk	DOC	Claw	Angle
+8	+2.2	+75	+127	+0.73	+12.9	+34	+3	+0.58	+0.51
Marb	RE	\$M	\$B	\$C					
+0.97	+0.46	+38	+166	+253					

BROUGHT TO YOU BY BROAD RIVER FARM  
Elsa 0716 is a Big Data daughter nursing a super nice heifer baby. The Thomas cows have been a blessing to Broad River Farm, and they continue to do well in our environment. They are cattle that have optimum performance with a strong maternal background and the dimension to raise high valued sons for use in commercial programs and hardworking daughters to put in production. Check out the heifer calf alongside 0716 she is salty good.

PE to MR BRF Alternative 315 (AAA 21392868) . Due approximately October 15, 2026.

## 49A Miss BRF Elsa 5128

ANGUS  
OPEN HEIFER  
Reg Pending  
DOB: 10/10/25  
Tattoo: 5128

Sire **E&B CONFEDERATE 507**  
**THOMAS CONFEDERATE 0705**  
Thomas Lucy Rose 8629  
Sire **THOMAS BIG DATA 7435**  
Dam **THOMAS ELSA 0716**  
Thomas Elsa 7948

CED	BW	WW	YW	SC	HP	Milk	DOC	Claw	Angle
-	-	-	-	-	-	-	-	-	-
Marb	RE	\$M	\$B	\$C					
-	-	-	-	-					

# BRED COW

*Division*



Lot 50

## TCC *Pride* 503

**50**

TCC *Pride* 503

ANGUS  
BRED COW  
Reg 19859083  
DOB: 09/20/19  
Tattoo: 503

Sire **SAV PRESIDENT 6847**  
Coleman Charlo 0256  
SAV Blackcap May 4136  
SAV Hesston 2217

Dam **DAVIS PRIDE 4259**  
Davis Pride 9259



CED	BW	WW	YW	SC	HP	Milk	DOC	Claw	Angle
+10	+0.4	+59	+95	+0.35	+8.9	+25	+18	+0.59	+0.56
Marb		RE		\$M		\$B		\$C	
+0.29		+0.37		+72		+71		+164	

BROUGHT TO YOU BY D & D HOLDINGS LLC

*We* lead off the fall calving cow division with a female that has a proven track record. Pride 503 produced a set of Balancer or Gelbvieh based brothers that averaged \$12,800 for TJB Gelbvieh in Chickamauga, GA last fall. This moderate statured SAV President daughter can flat raise a calf. She works hard and has ratioed at the top of the class at both Traditions Cattle and D and D Holdings. I had to twist the guys at D and D arm to offer this female in this event. They had no intention to offer her to the public as they secured her from a past From the Ground Up event. But I begged for them to allow the public the opportunity to invest in such a proven producer. This cow can deliver period. Her ROI has been tremendous and will continue to be very advantageous to the purchaser on May 9th. The Duggin Family exhibited a daughter of 503 on the national and state level and have racked up some banners while doing so. You ask 503 to do it and she can. Versatile, dependable and like a fine wine she gets better with age. Safe to Deep Roots for an early fall baby.

Aled to Partisover Deep Roots 126 on 11/10/25, due to calve August 20, 2026. Confirmed Safe AI.

## 503 PROGENY



TJB Kensington 442M



TCC Pride 1219M

- ANGUS FEMALES -



**Partisover Tradition 241**  
Service sire of Lot 51



**Lot 51**



**Partisover Burgess 068**  
Dam of Lot 52



**Lot 52**

**51** BRF *Elsa* 015

ANGUS  
BRED COW  
Reg 21458828  
DOB: 09/09/20  
Tattoo: 015

Sire **MUSGRAVE 316 COLOSSAL 137**  
LD Capitalist 316  
Musgrave Lady Barbara 545  
K C F Bennett Absolute  
Dam **THOMAS ABSOLUTE 7667**  
Thomas Elsa 45126

CED	BW	WW	YW	SC	HP	Milk	DOC	Claw	Angle
+10	-1.1	+59	+104	+0.32	+8.6	+22	+21	+0.47	+0.43
Marb		RE		\$M		\$B		\$C	
+0.68		+0.56		+60		+150		+255	

**BROUGHT TO YOU BY BROAD RIVER FARM**  
If you want an Angus cow with muscle shape and power this proven donor has got it. The crew at Broad River has flushed Elsa 015 twice and has averaged 12 high quality embryos per collection. The Musgrave 316 Colossal 137 cattle have been the talk of the business over the last couple years. They are highly productive cattle with base width and mass. Kelly Schaff has had tremendous success utilizing Colossal in his program. The young sons of Colossal scattered throughout the industry will make a lasting impact on the business. Elsa 015 has calving ease genetics with tons of body mass and big square hip. If you have seen the Tradition daughters at Kent Brown's, David Holts, and Will Chapman's you'd want to own this female and pray for a girl baby. Power begets power. Aled to Partisover Tradition 241 on 1/15/26, due to calve October 25, 2026. Confirmed Safe AI.

**52** Miss BRF *Burgess* 8132

ANGUS  
BRED COW  
Reg 21092296  
DOB: 09/08/18  
Tattoo: 8132

Sire **MUSGRAVE SKY HIGH 1535**  
Musgrave Big Sky  
Flag Queen W 00649  
S AV Pioneer 7301  
Dam **PARTISOVER BURGESS 068**  
Partisover Burgess 832

CED	BW	WW	YW	SC	HP	Milk	DOC	Claw	Angle
+7	+1.4	+53	+99	+0.61	+9.7	+30	+12	+0.46	+0.48
Marb		RE		\$M		\$B		\$C	
+0.70		+0.70		+55		+149		+248	

**BROUGHT TO YOU BY BROAD RIVER FARM**  
Here a little old school cool kind of mating here in Burgess 8132. Her dam is one of the first Partisover bred females the Broad River Crew ever injected with FSH. Burgess 068 was responsible for a slew of stout, solid, thick made sons that were slung all over the South the past several years. If you want proven cattle that have longevity bred into them Burgess 8132 would be high on our short list. She sells safe to Baldrige Grindstone for an early fall baby and an opportunity for you to mass produce her if you wish. 8132 has been flushed 3 times in the BRF program and averaged 10 embryos per collection. Aled to Baldrige Grindstone on 12/5/26, due to calve September 4, 2026. Confirmed Safe AI.

**BRED COW**

*Division*



**Lot 53**

**53** TBBA *Witch Hazel* T905

ANGUS  
BRED COW  
Reg 19586272  
DOB: 08/16/19  
Tattoo: T905

Sire **TEHAMA TAHOE B767**  
Tehama Upward Y238  
Tehama Mary Blackbird Y684  
K C F Bennett Fortress  
Dam **TBBA WITCH HAZEL 703**  
TBBA Witch Hazel 513



CED	BW	WW	YW	SC	HP	Milk	DOC	Claw	Angle
+12	+0.0	+68	+120	+1.95	+13.7	+25	+22	+0.49	+0.46
Marb	RE	\$M	\$B	\$C					
+0.71	+0.29	+77	+154	+277					

**BROUGHT TO YOU BY OLEO RANCH**

Again, if you like moderate statured cattle with a wide base, big feet and heavy- structure you'll like Witch Hazel T905. This Tahoe daughter has sold several sons in the past that have been well received by the cow calf producer. T905 has a balanced numeric set with built in calving ease, growth, added scrotal EPD, and is excellent natured. She sells safe to one of our favorite sons of the legendary BandB Blkbd Progress 3015, Koupals B&B Iceberg. She is due with a HEIFER baby that should be the kind that makes an impact on a program.

Aled to Koupals B&B Iceberg 4011 on 12/15/25, due to calve September 24, 2026. Confirmed Safe AI with a HEIFER calf.

**54** Thomas *Primrose* 9700

ANGUS  
BRED COW  
Reg 19739629  
DOB: 08/02/19  
Tattoo: 9700

Sire **LEACHMAN FOUNDATION G081D**  
G A R Progress  
TCR Ever Focus XG071  
Baldrige Waylon W34  
Dam **THOMAS PRIMROSE 4293**  
Thomas Primrose 0409



CED	BW	WW	YW	SC	HP	Milk	DOC	Claw	Angle
+9	+1.3	+57	+108	+0.36	+7.6	+19	+16	+0.53	+0.52
Marb	RE	\$M	\$B	\$C					
+1.18	+0.45	+40	+176	+268					

**BROUGHT TO YOU BY BROAD RIVER FARM**

The Primrose cow family has blessed so many Angus breeders. There are not as many Primrose females in the south as their use to be but those cattle were calf raising machines. 9700 is a foundation Thomas female that sports a shade over +1.18 for Marb. Angus cattle are the kings and queens of the beef business. I hate that we haven't pictured her service sire because he is one impressive individual. We love the Angus cow if you can't tell.

PE to MR BRF Alternative 315 (AAA 21392868), due approximately October 16, 2026.

**55** Miss BRF *Queen* 940

ANGUS  
BRED COW  
Reg 21552422  
DOB: 10/12/19  
Tattoo: 940

Sire **MUSGRAVE 316 COLOSSAL 137**  
LD Capitalist 316  
Musgrave Lady Barbara 545  
S AV Final Answer 0035  
Dam **THOMAS QUEEN 31223**  
Thomas Queen 6976

CED	BW	WW	YW	SC	HP	Milk	DOC	Claw	Angle
+8	+0.1	+64	+107	+0.52	+9.8	+21	+17	+0.44	+0.45
Marb	RE	\$M	\$B	\$C					
+0.57	+0.45	+65	+147	+256					

**BROUGHT TO YOU BY BROAD RIVER FARM**

Jacob and Austin were wise to dip into the Musgrave 316 Colossal sire a few years back before he became such a household name. The Broad River crew sneaks away in the fall to go hunting across the street from Musgrave Angus in Illinois. You might say Jacob knew that Colossal would create high valued daughters by hanging out on the street corner near Musgrave. The 316 progeny have been a blessing to so many and Colossal is definitely following in his sires footsteps.

PE to Thomas Confederate 0705 (AAA 19896888). Due approximately October 20, 2026 with a HEIFER calf.

**56** Thomas *Miss Lucy* 8537

ANGUS  
BRED COW  
Reg 19413597  
DOB: 07/25/18  
Tattoo: 8537

Sire **JINDRA ACCLAIM**  
Jindra 3rd Dimension  
Jindra Blackbird Lassy 1111  
Connealy Lead On  
Dam **THOMAS MISS LUCY 6933**  
Thomas Miss Lucy 0788



CED	BW	WW	YW	SC	HP	Milk	DOC	Claw	Angle
+4	+0.0	+57	+108	-0.29	+9.2	+29	+8	+0.50	+0.48
Marb	RE	\$M	\$B	\$C					
+0.74	+0.35	+24	+166	+239					

**BROUGHT TO YOU BY BROAD RIVER FARM**

Here is a high performing Miss Lucy female that blends the added extension an performance from Acclaim and with genetics form the Pathfinder sire Connealy Lead On. Lead On may have been a sire that was ahead of his time in our opinion but certainly one that blazed a path with his son Connealy Onward.

PE to Thomas Confederate 0705 (19896888). Due approximately October 1, 2026.

- FOUNDATION FEMALES -

Rounding out an incredible set of Angus cattle in this event is this set of Angus spring pairs. Several of these females are nursing Simmental or Simmental Influenced baby calves. A couple of these babies are embryo transfer calves out of some of the best Simmental cows in the BRF program. We talk about our cattle being versatile well here is the proof. These are young females with a lifetime of production in them. Take them home and choose how you wish to mate them and reap benefit.

**57** Thomas *Primrose* 0649

ANGUS COW  
SIM BABY  
Reg 19896771  
DOB: 09/17/20  
Tattoo: 0649

Sire **BALDRIDGE BEAST MODE B074**  
G A R Prophet  
Baldrige Isabel Y69

Dam **THOMAS PRIMROSE 8551**  
Jindra Acclaim  
Thomas Primrose 5591

CED	BW	WW	YW	SC	HP	Milk	DOC	Claw	Angle
+6	+1.2	+76	+134	+0.95	+7.6	+23	+19	+0.42	+0.38
Marb		RE		\$M		\$B		\$C	
+0.95		+0.29		+44		+152		+241	

**59** BRF *Miss Blackbird* 0335

ANGUS COW  
SIM BABY  
Reg 21016212  
DOB: 10/20/20  
Tattoo: 0335

Sire **STEVENSON TURNING POINT**  
Plattemere Weigh Up K360  
Stevenson Pride I167x

Dam **MISS BRF HAZEL 765E**  
S AV Momentum 9274  
Partisover Hazel 0111

CED	BW	WW	YW	SC	HP	Milk	DOC	Claw	Angle
+14	-0.6	+52	+90	+1.17	+13.2	+28	+10	+0.47	+0.47
Marb		RE		\$M		\$B		\$C	
+0.60		+0.57		+78		+146		+267	

**58** Miss BRF *Lucy* 267

ANGUS  
SPRING PAIR  
Reg 21553223  
DOB: 09/15/22  
Tattoo: 267

Sire **S AV JESSE JAMES 0968**  
S AV Renovation 6822  
S AV Blackcap May 8961

Dam **THOMAS LUCY 4382**  
G A R Prophet  
Thomas Lucy 0158

CED	BW	WW	YW	SC	HP	Milk	DOC	Claw	Angle
+8	+1.4	+62	+102	+1.06	+10.2	+23	+11	+0.42	+0.43
Marb		RE		\$M		\$B		\$C	
+0.85		+0.27		+70		+115		+219	

**60** BRF *Miss* 324

ANGUS PAIR  
SIM BABY  
Reg Pending  
DOB: 9/2/23  
Tattoo: 324

Sire **SQUARE B TRUE NORTH 8052**  
S AV Rainfall 6846  
Elbanna of Conanga 1209

Dam **THOMAS ESTER 0600**  
Quaker Hill Firestorm 3PT1  
Thomas Ester 8395

CED	BW	WW	YW	SC	HP	Milk	DOC	Claw	Angle
-	-	-	-	-	-	-	-	-	-
Marb		RE		\$M		\$B		\$C	
-		-		-		-		-	

BROUGHT TO YOU BY BROAD RIVER FARM  
Lot 57A: PB SM ET Bull calf (ASA 4668192) MR BRF Genoa 602 born 3/10/2026  
the ET Mating mating is GCC Genoa 2118k x Miss BRF Sazerac 7108E

BROUGHT TO YOU BY BROAD RIVER FARM  
PE to MR BRF Alternative 315 (AAA 21392868). Due approximately early November.  
Lot 59A: 3/4SM 1/4AN ET Heifer calf (ASA 4668194) Miss BRF Shiner 5185N born 10/16/2025 mating is W/C Style 69E x Miss BRF Shiner 747F

# Congratulations

## To the Calvin Alford Scholarship Recipients



Audrey Brown

- 2023 Keely Shultz
- 2024 Trey Chafin
- 2024 Audrey Brown
- 2025 Callie Bridges

The scholarship is given out to high school seniors, in conjunction with the GA Junior Livestock Foundation Expo in December.

For more information on how to apply contact Todd or Holly.



Callie Bridges

# FROZEN *Genetics*



Genflo *Missie* 921 / Lot 61 Donor



**LPVF DLX King Pin 0058**  
Sire of Lot 61A  
Angus embryos



**Next Level**  
Sire of Lot 61B  
SimAngus embryos



**PVF Missie 2113**  
The \$100,000 maternal sister to the Lot 61 donor dam.



**PVF Missie 5091**  
The \$60,000 maternal sister to the Lot 61 donor dam.



**PVF Missie 6228**  
Dam of the Lot 61 donor

## PVF MISSIE 6228 *family*

BROUGHT TO YOU BY OLEO RANCH

### **61A** King Pin x Genflo Missie 921 *Embryos*

SELLING 4 IVF SEXED HEIFER EMBRYOS

*Sire* PVF Blacklist 7077  
**PVF DLX KING PIN 0058**  
PVF Lucy 4189

*Dam* SCC SCH 24 Karat 838  
**GENFLO MISSIE 921**  
PVF Missie 6228

### **61B** Next Level x Genflo Missie 921 *Embryos*

SELLING 4 IVF SEXED HEIFER EMBRYOS

*Sire* KRJ Dakota Outlaw G974  
**NEXT LEVEL**  
KRDL Caedence C37

*Dam* SCC SCH 24 Karat 838  
**GENFLO MISSIE 921**  
PVF Missie 6228

For the first time Ky Alford is allowing you to dip into his stash of embryos. The donor dam of these sexed heifer embryos was a fun animal to exhibit. She is a direct daughter of the famous PVF Missie 6228. Alan and Theresa Miller along with their partners John and LeAnn Lovin have had a whale of a run with 6228. Her biggest feat as a show heifer was being named Reserve Champion at the National Western Stock Show yet her ability to raise high end show cattle may be more impressive. One of our favorite females of recent times was the \$100,000 PVF Missie 2113 a King Pin x 6228 female purchased by Braxton Cole and Foster Brothers Farms of Lockney Texas. She and her sister are the main reason we used King Pin on Missie 921. We figured if it worked that well on 6228 why not try it on her daughter 921. Just this month a PVF Capone daughter of 6228 was a \$60,000 highlight of the spring open heifers in the PVF sale. Take your pick of making Angus heifer babies by King Pin or a wild looking SimAngus heifer calf by Next Level. Selling choice of 4 IVF sexed heifer embryos guaranteeing 1 pregnancy if implanted by a certified technician.

# FROZEN Genetics



**Oleo Missie 152J**  
*Lot 62 Donor*

## 62 Raven Stand Alone x Oleo Missie 152J Embryos

SELLING 3 OR 5 CONVENTIONAL EMBRYOS

Sire Raven Republic I564  
**RAVEN STAND ALONE**  
Raven Emma E I418

Dam S A V Downpour 8794  
**OLEO MISSIE 152J**  
Oleo TCC Missie 127

BROUGHT TO YOU BY OLEO RANCH

We own Oleo Missie 152J with our good friends the Elmore Family from Enoree, South Carolina. I was at their place not long ago the day she calved and was mega impressed. Her long, sleek, feminine frontend would make you want to drool. Her huge mid-section would make you believe she will stay in good flesh when times are hard. Her udder is near perfection and her dam is still clicking right along raising a tremendous bull calf as well. We decided to sample Raven Stand Alone after we got the run down on what Jason Hoffman thought of him once he got him in from the Raven Sale last year. If it means anything to you Jason went and purchased Stand Alone's mother from Raven Angus as well. Here is an outcross mating to much of what the From the Ground Up group produces. This cow is legit folks, and she is just beginning to write her own chapter. Unique outcross genetic opportunity. Selling 3 or 5 conventional embryos guaranteeing 1 pregnancy if implanted by a certified technician.



**Raven Stand Alone**  
Sire of Lot 62 embryos



**Oleo TCC Missie 127**  
Dam of Lot 62 Donor

## 63 Heritage 8732 x Oleo Donna 7TA1 Embryos

SELLING 3 CONVENTIONAL EMBRYOS

Sire SITZ Continuity  
**SITZ HERITAGE 8732**  
SITZ Emma E 5177

Dam S A V Resource 1441  
**OLEO DONNA 7TA1**  
Coleman Donna 1275

BROUGHT TO YOU BY SAM CRITCHELOW

Let me share with you why we do what we do. Our goal at Oleo Ranch is to make the best cattle we can with our resources that can positively affect the bottom line of our customers. Oleo Donna 7TA1 is a great success story. She was purchased by Sam Critchelow from McDaniels, Kentucky in Volume 2 of From the Ground Up for \$4500. Mr. Sam has made embryos out of 7TA1 like she was a laying hen. He has babies on the ground that are very consistent, and her cow family speaks for itself. Here is where the ROI calculator comes in affect. Sam recently sold Donna 7TA1 at 9 years of age for nearly 800% of his purchase price and has a laundry list of females to keep in the future. Donna 7TA1 is also the grandmother of Oleo Flatwoods, the lead off animal if this event. Sam has graciously allowed us to market a set of embryos from one of the most potent cows to ever carry the Oleo prefix.

Selling 3 conventional embryos guaranteeing 1 pregnancy if implanted by a certified technician.



**Oleo Donna 7TA1** *Lot 63 Donor*



**SITZ Heritage 8732**  
Sire of Lot 63 Embryos

## 64 LT Flint x Partisover Burgess 265 Embryos

SELLING 3 IVF EMBRYOS

Sire Ellingson Badlands 0285  
**LT FLINT 4005**  
LT Ashley 0027

Dam KG Justified 3023  
**PARTISOVER BURGESS 265**  
Partisover Burgess 726

BROUGHT TO YOU BY BETH TARTT

Beth Tartt is as good of a friend as one could ever wish for. She is a passionate breeder of high-quality cattle of multiple breeds. Mrs. Beth has been a loyal supporter of ours dating back nearly 20 years now. She has a super nice set of females in Central Mississippi. In Volume 1 of From the Ground Up Beth purchased lot 2A heifer calf. That female has matured into one nice young cow. Partisover Burgess 265 was the \$9000 high selling open heifer that day and we were excited to see Mrs. Beth get her bought. This past fall after 265 calved Beth wanted to make some embryos that would go along with our philosophies. She chose to mate 265 to LT Flint 4005. Partisover Burgess 265 is a full sister in blood to Partisover Tradition 241. Ask the folks that have used Tradition and see what they have to say. There are some unique females roaming the Southeast out of Tradition. This may be the only chance to acquire Angus embryos from Beth Tartt. The rest is history they say and never bet against a Burgess female from a long line of productive cattle. Selling 3 IVF non sexed embryos guaranteeing 1 pregnancy if implanted by a certified technician.



**Partisover Burgess 265**  
*Lot 64 Donor*



**LT Flint 4005** Sire of Lot 64 embryos

# Red Angus

## Division



**Damar MS Conquest C052**

Donor dam of Lot 65, 67 and the MGD of Lot 68



**Brown Titus K6257**

Service sire of Lot 65 & 66



**Lot 65**



**Lot 66**

**65**

### IWC Ms Grace M106

1A RED ANGUS  
BRED HEIFER  
Reg 5054259  
DOB: 8/30/2024  
Tattoo: M106

Sire **HXC ALLEGIANCE 5502C**  
**HXC GRINDSTONE 9908G**  
HXC 605D  
Dam **BROWN JYJ REDEMPTION Y1334**  
**DAMAR MS CONQUEST C052**  
BROWN MS CONQUEST 27870



ProS	HB	GM	CED	BW	WW	YW	Milk	HPG	STAY
96	30	66	9	-0.6	79	134	26	10	12
Marb	REA	YG	CW	Fat					
0.47	0.29	0.07	37	0.02					

BROUGHT TO YOU BY IRON WILL CATTLE

M106 is an ET heifer stemming from our herd matriarch donor, Conquest C052 and sired by the breed leading HXC Grindstone 9908G. This mating really hit the ground for us on all fronts. Ms Grace is well rounded in her performance, offering you the chance to take your herd in whatever direction you need. She is the feminine picture of perfection for Red Angus! Aled to Brown Titus K6257 (RAAA 4604779) on 12/3/25, due to calve September 12, 2026. PE to JYJ Patriot L5267 (RAAA 4800326) and JYJ Patriot L5268 (RAAA 4800328) 12/12/25-3/17/26. Confirmed Safe AI with a HEIFER calf.

**66**

### IWC Ms Star M118

1A RED ANGUS  
BRED HEIFER  
Reg 5054231  
DOB: 10/2/2024  
Tattoo: M118

Sire **BIEBER BLUE CHIP H302**  
**BIEBER BLUE CHIP K389**  
BIEBER LAURA 266F  
Dam **SHADYS BONNE LEAGUE 9922**  
**SHADYS BH LEAGUE Z052**  
BULL HILL CHFLDY 2052



ProS	HB	GM	CED	BW	WW	YW	Milk	HPG	STAY
136	83	53	14	-3.1	56	91	23	9	20
Marb	REA	YG	CW	Fat					
0.36	0.18	0.11	28	0.04					

BROUGHT TO YOU BY IRON WILL CATTLE

M118 is the natural daughter of one of the first breeding cows we purchased from Shady Bottom when we started IWC. Sired by one of our herd bulls, a Bieber Bluechip son, she is a more moderate female that ranks top 15% in her ProS, HB and Stay. She will be a long lasting producer of easy calving, wider ribbed calves. The Bull calf she's carrying, sired by Brown Titus, will bring you even more growth and performance in the next generation. We can see lots of potential in Ms Star as she is just starting her production cycles. It's hard to let this one go! Aled to Brown Titus K6257 (RAAA 4604779) on 12/3/25, due to calve September 12, 2026. PE to JYJ Patriot L5267 (RAAA 4800326) and JYJ Patriot L5268 (RAAA 4800328) 12/12/25-3/17/26. Confirmed Safe AI with a BULL calf.



Lot 67

67

IWC Ms Colleen L112

1A RED ANGUS  
BRED COW  
Reg 4875516  
DOB: /17/2024  
Tattoo: L112

Sire FRITZ JUSTICE 8013  
**LACY COLLUSION 115F**  
LACY LAKOTA 8105  
BROWN JYJ REDEMPTION Y1334  
Dam **DAMAR MS CONQUEST C052**  
BROWN MS CONQUEST Z7870



ProS	HB	GM	CED	BW	WW	YW	Milk	HPG	STAY
106	46	60	12	-0.8	76	121	22	10	15
Marb	REA	YG	CW	Fat					
0.62	0.23	0.02	21	0.01					

BROUGHT TO YOU BY IRON WILL CATTLE

L112 is another ET daughter stemming from our Matriarch, C052. Sired by Lacy Collusion 115F, this female has performance written all over her. She has growth in weaning weight and yearling weight with her marbling all ranking in the top 15% and rib in the top 20%. If you're looking for a female to improve weight and carcass, she's a good one for the job!

Aled to Brown Sure Thing (RAAA 4641233) on 12/3/25, PE to JYJ Patriot L5267 and JYJ Patriot L5268 12/12/25-3/17/26. Confirmed safe, due end of September.

68

HF Blue Chip 215 x IWC MS ABBIE J101 Embryos

SELLING 5 CONVENTIONAL EMBRYOS

Sire BIEBER BLUE CHIP H302  
**HF BLUE CHIP 215**  
BIEBER TORYANNA 488D

Dam HXC ALLEGIANCE 5502C  
**IWC MS ABBIE J101**  
DAMAR MS CONQUEST C052

BROUGHT TO YOU BY IRON WILL CATTLE

We are excited to offer a chance at genetics that we have bred, developed, marketed and believe in. J101 has proven herself over the last three years and after seeing a heifer she produced in production, we had to add her to the flush pen. 215 was the lead off Red bull in Herndon Farms sale and we jumped at the chance to purchase him. This J101x 215 combination is a sure hit! His first calves, already on the ground, are phenomenal with a solid stamp you can't miss - you can also have a chance for your choice of one of them in the Pick of the Pen lot sold this year! Semen also available private treaty.

Selling 5 conventional embryos guaranteeing 2 pregnancies if implanted by a certified technician.

69



Pick of the Pen

*What* is becoming a yearly offering only for the bidders of the From the Ground Up Sale, IWC is again opening the gate to our 2025 Fall-born weaned calves. This is your opportunity to walk through the group and pick any calf that suits your specific needs. It can be a heifer or bull! Each calf has been DNA tested to provide you the most accurate, genomically enhanced EPD's. We have an excellent selection of over 80 ET, AI and Natural calves from our Donor group and multi-generational IWC heifer and cow herds. **Sires include but are not limited to: Brown Titus K6257, Bieber Jumpstart J137, HXC Charter 6610D, HF Bluechip 215 and Bieber Bluechip H302.** Don't miss this opportunity to take your pick - the sky's the limit!

\*Full Calf list will be available the day of sale.\*

\*If a bull calf is chosen, IWC offers the option to grow him to yearling age and will test and guarantee breeding soundness.\*

\*If a heifer calf is chosen, IWC offers the option to retain her to breeding age and provide a confirmed pregnancy via AI or IWC herd bull.\*



Brown Titus K6257



Bieber Jumpstart J137



HF Bluechip 215



Bieber Bluechip H302

# Falling In Love

BROUGHT TO YOU BY OLEO RANCH

You are going to Fall In Love here with our lead off female for the 2026 From The Ground Up Simmental division. The more we study this bred heifer the more we like her. She is sired by the \$620,000 STCC Tecumseh and backed by one of the most proven donors in the C and C. Breaking Hearts was a competitive show female in her own right for Cindy Cooper several years back. She has 35 daughters registered with the American Simmental Association and they have graced some of the great programs in the South. When you study M34 in the flesh you will appreciate her overall build. She is super flexible in her spine, moves with ease, takes a big step and plants her rear feet right where the front foot left. We have always tried to offer cattle that are versatile when it comes to making flexibility. No matter your angle or breeding program good cattle should fit in. We thing the ceiling is high for the ability for this bred heifer to produce high quality livestock. Safe to the calving ease phenotypic sensation PVF Capone 2104 with a BULL baby. .

Aled 11/21/25 to PVF Capone 2104 due to calve August 31, 2026 with a BULL calf.



**Miss CCF Breaking Hearts**  
Dam of Lot 70

**70**

**MISS CCF *Falling In Love***

**SIMMENTAL  
BRED HEIFER**  
Reg 4421166  
DOB: 4/03/23  
Tattoo: M34

Sire **VCL FORESIGHT**  
**STCC TECUMSEH 058J**  
HF SERENA PB SM  
Dam **MR HOC BROKER**  
**MISS CCF BREAKING HEARTS**  
MISS CCF FANTASY U18

CE	BW	WW	YW	Milk	API	TI
9.1	1.4	70.4	107.8	18.5	124.7	73.7



**Lot 70**



**Lot 71**



**R/F Up The Limit H214**  
Dam of Lot 71

**71**

**MISS CCF *Finesse***

SIMMENTAL  
BRED HEIFER  
Reg 4417458  
DOB: 2/06/24  
Tattoo: M908

Sire **STCC TECUMSEH 058J** HF SERENA PB SM  
WLE COPACETIC E02  
Dam **R/F UP THE LIMIT H214** CMFM BURN BABY

CE	BW	WW	YW	Milk	API	TI
9.1	1.4	70.4	107.8	18.5	124.7	73.7

BROUGHT TO YOU BY OLEO RANCH

We wanted to step up our Simmental offering for the 2026 event. The dam of Miss CCF Finesse is one potent producer. The crowd at C and C Farms has generated quite a bit of interest in the cattle produced by Up The Limit. Her son Mr CCF Saddle Up is already creating a stir with his first progeny. Many of you had the opportunity to see Hallie Elrod's dominate purebred Simmental show heifer this past year. Her sire is a maternal sister to M908. This baldy bred heifer is loose made and built for the times. She is a bigger outlined female with a correct skeleton and a killer look. Her pedigree alone is worth checking out the video or driving to the Flatwoods community. She sells with a SimAngus HEIFER in utero sired by the popular PVF Capone 2104.

Aled 12/3/25 to PVF Capone 2104 due to calve September 12, 2026 with a HEIFER calf.



**MR CCF Dirty South**  
Maternal brother to Lot 71



**Miss CCF M908**  
The \$13k full sister to Lot 71

# Simmental Division

- MO SASSY -

These girls are full sisters to the dam of Lot 72 and maternal sisters to the dam of Lot 73.



AFCE Pays to be Sweet 925G



AFCE Keep Believing 961G



AFCE Madam 705E

Full sister to the dam of Lot 73 and a maternal sister to the dam of Lot 72.



Lot 72



Lot 73

72

-A Mo Sassy 479M

SIMANGUS  
BRED HEIFER  
Reg 4476713  
DOB: 9/17/24  
Tattoo: 479M

Sire **WLE COPACETIC E02**  
**ROCKING P PRIVATE STOCK H010**  
RP/MP BUILT TO LOVE A021 3/4 SM  
LLSF PAYS TO BELIEVE ZU194 1/4 AN  
Dam **AFCE PAYS TO BE BRAVE 943G**  
PARTISOVER MO SASSY 258Y

CE	BW	WW	YW	Milk	API	TI
9.1	1.4	70.4	107.8	18.5	124.7	73.7

BROUGHT TO YOU BY BAR A RANCH

Mo Sassy 479M is one good creature. If any of you remember the incredible bred heifer the Akins crew brought us last year you will want to check this one out as well. Her build is right on. When Team Akins was showing us through the bred heifers out on winter grazing, I spotted this one from a mile away. I had to pry and beg and may even have done little talking to Margo Akins to get this female for this event. You cannot draw cattle much better than 479M. She comes from a line of incredible Mo Sassy derivatives that have raised banner fetching cattle and bulls that have been well received by commercial cattlemen and women. This thing gets me wound up folks. Like I cannot quit thinking about her getting bred to an elite show type Simmental sire and watching the chips and the cash get raked in by her new owner. Bred 12/31/25 to ACE Resilient 437(Lot 1 Angus bull from the 2025 Source Sale), due to calve approximately early October 2026.

73

-A Mo Sassy 474M

SIMANGUS  
BRED HEIFER  
Reg 4476673  
DOB: 9/15/24  
Tattoo: 474M

Sire **W/C RELENTLESS 32C**  
**RECKONING 711F**  
RWA KRISHA-ET 5/8 SM  
W/C EXECUTIVE ORDER 8543B 3/8 AN  
Dam **AFCE HEAD LADY 815F**  
PARTISOVER MO SASSY 258Y

CE	BW	WW	YW	Milk	API	TI
9.1	1.4	70.4	107.8	18.5	124.7	73.7

BROUGHT TO YOU BY BAR A RANCH

The Reckoning sired cattle continue to impress us. We have seen Reckoning daughters in production and are super impressed by their maternal ability and their structural integrity. The feet and leg structure on the Reckonings are what we want to produce in our programs. Mo Sassy 474M is another granddaughter of the great low percentage female that Callie Akins would have shown in her later years as a junior exhibitor. She is bred to be in the purple and could raise herd bulls for commercial producers. Did I mention we like versatile cattle? Safe to one of the most balanced bulls in the Simmental breed in our opinion Point Proven. Aled 11/25/25 to WHF Point Proven H45 due to calve August 30, 2026.



Lot 74

## COMBINING POWER, LOOK & PEDIGREE!

### 74 Oleo *My Fantasy* J110

SIMMENTAL  
BRED COW  
Reg 4672830  
DOB: 3/04/21  
Tattoo: J110

*Sire* W/CNS DREAM ON L186  
**WS PILGRIM H182U**  
WS MARLA 276M PB SM

*Dam* W/C RAPID FIRE 2101C  
**OLEO TRUE FANTASY 867F**  
OLEO CRIMSON FANTASY 567C

CE	BW	WW	YW	Milk	API	TI
10.0	2.1	67.9	91.7	18.2	102.6	67.7

#### BROUGHT TO YOU BY OLEO RANCH

We have always appreciated this young baldy cow. Ky Alford took her to more than one show during her career and did very well. Ky was slated to haul her to Perry and let everyone know she was ready to be competitive, but his dad had bred 110J a bit too early for that project as she calved a couple weeks before we went to the state show. We love this young cow for her power in a smooth package. Her density and stoutness of bone with muscle shape and skeletal build is a combination for breeding success. She is sired by WS Pilgrim and backed by a Rapid Fire cow that could tote the mail. Nursing this young cow is a cool marked Woodford heifer calf that needs a little feed and could be a competitive show creature herself. 110J sells safe to PVF Capone 2104 to have a half blood SimAngus baby.

Aled 1/17/26 to PVF Capone 2104 due to calve October 26, 2026.

### 75 KWA *Chillin* 438M

SIMMENTAL  
BRED HEIFER  
Reg 4670711  
DOB: 10/15/24  
Tattoo: 438M

*Sire* W/C DOUBLE DOWN 5014E  
**WHF/JS/CCS DOUBLE UP G365**  
WHF SUMMER 365C PB SM

*Dam* THSF LOVER BOY B33  
**OLEO JUST CHILLIN 138J**  
OLEO FANTASTIC 836F

CE	BW	WW	YW	Milk	API	TI
9.1	1.4	70.4	107.8	18.5	124.7	73.7

#### BROUGHT TO YOU BY OLEO RANCH

Oleo Chillin 438M is a moderate built, smooth made Double Up daughter that comes from a long line of productive females in the Oleo Ranch program. 438M mother is a potent little cow weaning a higher percentage of her body weight than most cows we deal with. These cattle are fertile and can raise a big youngster. Several of the cows in the pedigree of this bred heifer are still in production as aged females. This young lady belongs to our youngest son Chap, and she is as tame or as easy going as he is. 438M is safe with a HEIFER baby by Point Proven.

Aled 12/3/25 to WHF Point Proven H45 due to calve September 11, 2026 with a HEIFER calf.

### 74A Oleo *My Fantasy* 510N

SIMMENTAL  
OPEN HEIFER  
Reg 4672831  
DOB: 11/04/25  
Tattoo: 510N

*Sire* EGL FIRESTEEL 103F  
**WHF/JS/CCS WOODFORD J001**  
WHF SUMMER 365C PB SM

*Dam* WS PILGRIM H182U  
**OLEO MY FANTASY J110**  
OLEO TRUE FANTASY 867F

CE	BW	WW	YW	Milk	API	TI
12.1	1.6	76.4	103.5	19.0	127.6	76.3

VIEW AND BID ONLINE AT



# Females

with Power



Lot 76



Miss CCF G4  
Dam of Lot 76



-A Jestress 511N  
Lot 76A

## 76 -A Jestress 394L

SIMMENTAL  
BRED COW  
Reg 4375678  
DOB: 9/29/23  
Tattoo: 394L

Sire **W/C RELENTLESS 32C**  
**JSUL SOMETHING ABOUT MARY 8421**  
JBSF PROUD MARY PB SM  
MR CCF 20-20  
Dam **MISS CCF G4**  
MISS CCF DEANNA D116

CE	BW	WW	YW	Milk	API	TI
9.1	1.4	70.4	107.8	18.5	124.7	73.7

BROUGHT TO YOU BY BAR A RANCH

-A Jestress 394L is a thick, dense, wide made female with punch when you get in behind her. She is a product of the great G4 donor that is a 20-20 daughter back to a member of the elite Broker x Jestress 9015 combination. The G4 cow is a cool made perfectly build Simmental female that can be used to show cattle to the highest degree. 394L is nursing a real neat Point Proven female that needs a show barn to call her home. 511N is cool looking, great built and got plenty of look to run on a show circuit. There are multiple generations of high-quality genetics bred into this pair of Simmental cattle. You may have to drive a fair piece to find the quality this baby possess.

Aled 11/27/25 to WHF/JS/CCS Woodford J001, due to calve September 5, 2026.

## 76A -A Jestress 511N

SIMMENTAL  
OPEN HEIFER  
Reg 4640906  
DOB: 8/22/25  
Tattoo: 511N

Sire **CCS/WHF OL'SON 48F**  
**WHF POINT PROVEN H45**  
WHF DELILAH 45D PB SM  
JSUL SOMETHING ABOUT MARY 8421  
Dam **-A JESTRESS 394L**  
MISS CCF G4

CE	BW	WW	YW	Milk	API	TI
9.1	1.4	70.4	107.8	18.5	124.7	73.7

## 77 MISS BRF Upperclass 871F

SIMANGUS  
BRED COW  
Reg 4054390  
DOB: 9/9/18  
Tattoo: 871F

Sire **MR NLC UPGRADE U8676**  
**SANDEEN UPPER CLASS 2386**  
SANDEEN DONNA 7386 5/8 SM  
3C MACHO M450 BZ 3/8 AN  
Dam **PARTI GIRL 065W**  
PARTISOVER BURGESS 713

CE	BW	WW	YW	Milk	API	TI
9.1	1.4	70.4	107.8	18.5	124.7	73.7

BROUGHT TO YOU BY BROAD RIVER FARM

Watch out I haven't read a pedigree like this female in a few days. I bet you can guess what she looks like by reading her pedigree as well. 871F is a thick made, dense, bold bodied female with a ton milk. She is carrying another heifer baby that will be a full sister to the one she is nursing. The Burgess cows have been good to all of us and they work quite well when you sprinkle in a little Simmental genetics as well.

PE to BRF MR PRIVATE STOCK 327L (ASA 4393870), due approximately October 25, 2026 with a HEIFER calf.

## 77A MISS BRF Class 5221N

SIMANGUS  
OPEN HEIFER  
Reg 4668189  
DOB: 11/11/25  
Tattoo: 5221N

Sire **ROCKING P PRIVATE STOCK H010**  
**BRF MR PRIVATE STOCK 327L**  
MISS BRF SHINER 747F 3/4 SM  
SANDEEN UPPER CLASS 2386 1/4 AN  
Dam **MISS BRF UPPERCLASS 871F**  
PARTI GIRL 065W

CE	BW	WW	YW	Milk	API	TI
9.1	1.4	70.4	107.8	18.5	124.7	73.7



**Lot 78**



**HF Serena**  
 Legendary maternal  
 granddam of Lot 78

# The Senenafamily



**SES STCC Little Seniorita 129L**  
 Lot 78, shown as a calf

## **78** SES STCC *Little Seniorita* 129L

**SIMANGUS BRED COW**  
 Reg 4258509  
 DOB: 6/2/23  
 Tattoo: 129L

*Sire* **STCC PAY UP 6147**  
 LLSF PAYS TO BELIEVE ZU194  
 STF NOSTALGIA 155Z 3/4 SM  
 CIRCLE M TEJAS 1/4 AN

*Dam* **STCC SENORITA 8197**  
 HF SERENA

CE	BW	WW	YW	Milk	API	TI
9.1	1.4	70.4	107.8	18.5	124.7	73.7

**BROUGHT TO YOU BY KATHERINE NEMCOVIC**  
 This royally bred darling belongs to a super young lady from Florida Miss Katherine Nemcovic. Katherine campaigned 129L "Little Seniorita" at multiple shows during her career. Her highlight was being named 9th Overall Percentage Female at the 2024 Junior Nationals and was Reserve Champion Percentage Female at the 2024 Simmental Breeders Sweepstakes. "Little Seniorita" is built for speed. She is long necked, loose spined, soft legged, easy on the move and round bodied. Her dam was a very successful female that was sold in last year's event to JT and Chelsea Sumner. 129L's granddam is the breed impacting HF Serena. Power in the pedigree in a wild looking creature.  
 Aled 12/28/25 to THSF Lover Boy B33 due October 6, 2026.

## **79** MISS BRF *Ignite* 9407G

**SIMANGUS BRED COW**  
 Reg 4668190  
 DOB: 10/10/19  
 Tattoo: 9407G

*Sire* **FBF1/SF IGNITION**  
 FBF1 COMBUSTIBLE  
 FBF1 GORGEOUS LADY 3/4 SM

*Dam* **BRF WATCHER 310A**  
 MR NLC UPGRADE U8676 1/4 AN  
 PARTISOVER BURGESS 068

CE	BW	WW	YW	Milk	API	TI
9.1	1.4	70.4	107.8	18.5	124.7	73.7

**BROUGHT TO YOU BY BROAD RIVER FARM**  
 As we wind out this sale book, we appreciate you looking through the sale offering. This baldy Ignite is extremely good looking, mobile and great necked. She has added power and extension to add to any program.  
 PE to MR BRF Alternative 315 (AAA 21392868). Safe in calf due approximately November 10, 2026 with a HEIFER calf.



*View Videos*

[www.OleoRanchCattle.com](http://www.OleoRanchCattle.com)

# Commercial *females*

## 25 LOTS

### Fall Calving Commercial Bred Heifers

For the first time ever offered in this event we have a set of fall calving commercial bred heifers from Wes and Rick Hopper families.

These heifers were AI bred on 12/30/25 to Square B True North and ran with OMF Epic sons.

### 3-N-1 Pair

Broad River Farm will have a first calf cow with a heifer calf at side. Bred back to calve this fall.

### Fall Calving Commercial Bred Heifers

Oleo Ranch will have a small set of females.



Ashlyn says her sale heifers are kid friendly!

Check our website for details and videos.

**Please contact Todd at (706) 207-9454 if you have any additional questions.**

## We hope to see you

# *Sale Day!*



# The Sale *Group*

## OLEO RANCH

Todd, Holly, Ky & Chap Alford  
Elberton, GA

Todd (706) 207-9454 | Holly (706) 270-3994

## BAR A RANCH

Chandler, Jess & Margo Akins  
Nashville, GA

Chandler (229) 237-2449 | Jess (740) 225-2394  
Callie Akins (229) 237-4236

## BROAD RIVER FARM

Wayne, Carrie, Tyler & Austin Ertzberger  
Jacob, Sarah, Harper & Carter Holmes  
Carnesville, GA

Austin (706) 599-8985 | Jacob (678) 986-7085

## D & D CATTLE CO.

Dusty Smith and David Corder  
Maysville, GA

Dusty (706) 654-8790  
David (770) 539-1588

## ET FARMS

Cole, Stephanie, Hallie, Kate & Hoke Elrod  
Alex, Hannah, Elijah and Judah Tolbert  
Talmo, GA

Cole (678) 410-1312 | Beau Brissy (678) 848-0801  
Alex Tolbert (706) 338-8733

## HOPPER FAMILY

Wes & Renee Hopper  
Rick, Leann & Ashlyn Hopper  
Pitts, GA

Rick (229) 322-3745

## IRON WILL CATTLE

Brian, Jessica, Annabelle, Champ & Eloise Lance  
Madison, GA

Brian (706) 781-8639

## POTTS BROS FARM

Kyle, Chelsey, Katy Paige, Parker & Thomas Potts  
Jefferson, GA

Kyle (678) 410-5157

## SALACOA CATTLE COMPANY

Brad, Amy, Hampton & Molly Cox  
Waleska, GA

Brad (770) 231-0074

## SHIRLEY SHOW CATTLE

Matt, Cameron, Jack, Beau, Merrit Shirley  
Jefferson, GA

Matt (706) 983-0276

## TRADITIONS CATTLE COMPANY

David, Judy, Callie, Cole & Curt Craig  
Calhoun, GA

David (770) 773-0751

## VF LIVESTOCK

Adam, Megan, Keely, & Blair Verner  
Smithville, GA

Adam (706) 474-0091





*Return Service Requested*

TIME SENSITIVE MATERIAL | DO NOT DELAY



[www.OleoRanchCattle.com](http://www.OleoRanchCattle.com)